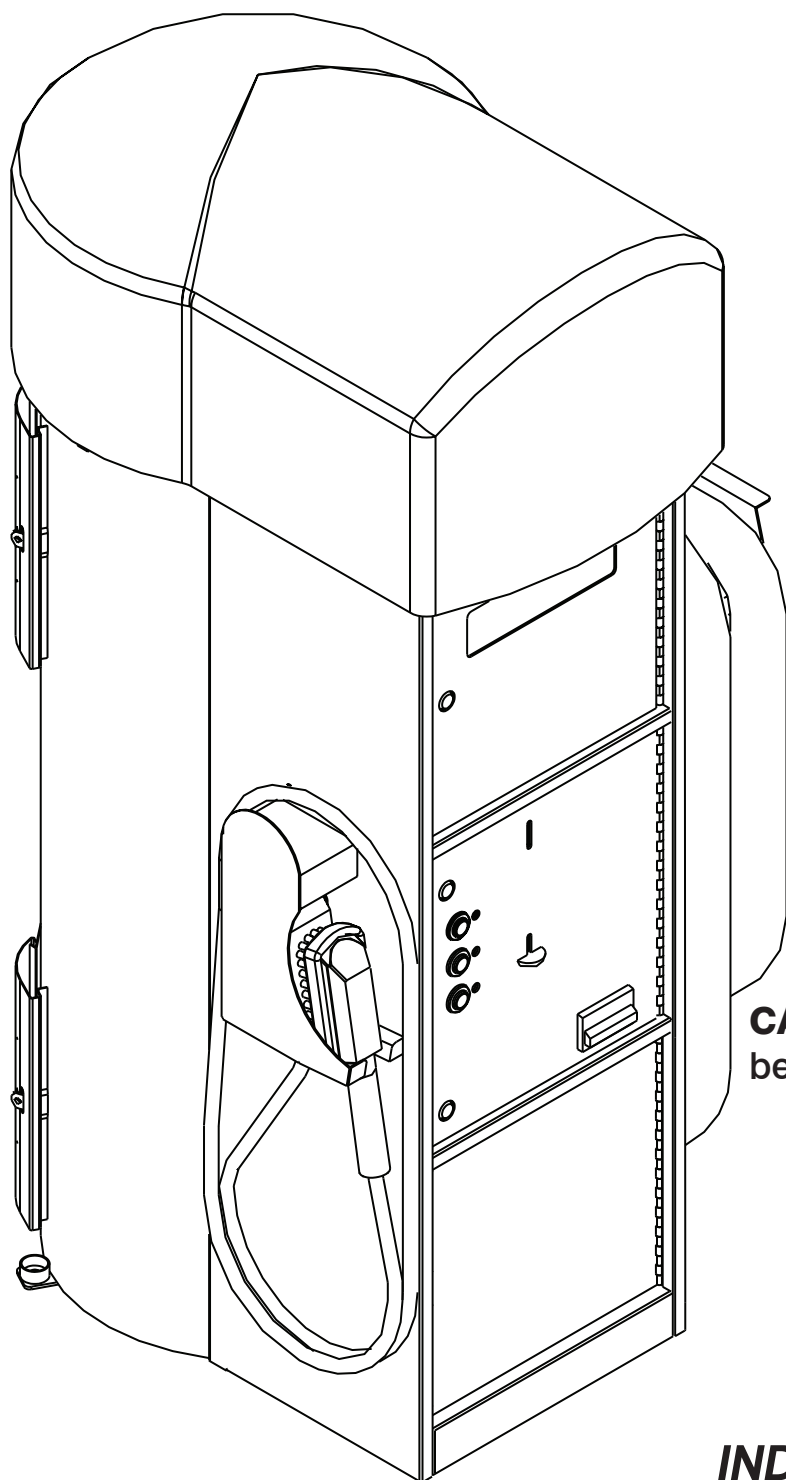


CARPET WIZARD

Model 510000 Parts Guide



CAUTION: Read the instructions
before using the appliance!



INCREDIBLY POWERFUL

INDUSTRIAL VACUUM SYSTEMS

Limited Warranty.....	1
Vac Motor Warranty Policy	2
Parts Guide	3
Parts Sheet - Vac Parts	4
Parts Sheet - Cabinet Top Doors.....	5
Parts Sheet - Mechanical.....	6
Part Sheet - Control Chassis	7
Parts Sheet - Commerce	8
Parts Sheet - Brush Assembly	9
Machine Wiring Diagram	10
Harness and Pump Wiring	11
Dome Light Wiring Diagram	12
Two Motor Wiring Diagram.....	13
Three Motor Wiring Diagram	14
Machine Wiring - Middle Door	15
Notes.....	16
Decals	17



Industrial Vacuum Systems (Company) provides a limited one year warranty on components and piece of equipment produced by the Company to be free from defects in material and workmanship. Electrical assemblies see Appendix A, have a limited two year warranty on the controller to be free from defects in material and workmanship. This limited warranty does not cover equipment that has been damaged due to misuse, misapplication, modification, altered, neglected, attempted theft, vandalism, connection to improper voltage supply, modification, or such parts that are commonly recognized to be subject to wear in normal usage. Normal use products are, but not limited to, those listed on Appendix B; which are warranted for 90 days. Every component and piece of equipment is packaged to assist in safe handling of the product.

Claims must be submitted in writing within the appropriate coverage period as covered by this warranty, from date of shipment, to the Company's warranty/repair department. If the return is approved an RMA and labeling instructions will be issued and the product can be returned. Returned product without the appropriate RMA and label will be issued to scrap and all warranties/replacements will be considered null and void. If the product receiving the RMA is not returned within 20 days from date of issuing the RMA then any credit toward the product will be reduced by 25%. If the product is not returned within 30 days of issuing the RMA then any credit will be reduced by 50%. A testing fee of \$20.00 will be applied, if the product passes all tests related to the written claim, then the fee will be applied and paid prior to return of the product. If the product fails the test then the fee will not be applied. The Company may charge a 20% restocking fee for returned product and/or an order, which is canceled and/or material has already been ordered and/or received to fill such order.

The Company's warranty/repair department will inspect all components, submitted under warranty. Warranty replacement will be based solely on the analysis and confirmation that the product defect was caused by material and/or workmanship. The company reserves the right to change the design of the product without assuming any obligation to modify any product previously manufactured or to replace warranted product other than with redesigned product. In some cases it is easier for the customer to send a Company purchased product direct to the manufacturer for replacement. In those cases the customer will be notified that their product falls under that process and should work with that manufacturer directly. Appendix C shows the purchased parts that falls under this case.

This warranty covers the product replacement only; charges for damages, freight and/or labor will not be accepted. There are no warranties expressed or implied which extend beyond this Limited Warranty. The loss of use of the product, loss of time, inconvenience, commercial loss, incidental or consequential damages is not covered. The Company shall not be liable for incidental, special, or consequential damages including without limitation damages resulting from personal, bodily injury or death or damages to or loss of use of property.

APPENDIX A

2-Year Warranty Controllers

Sensortron, Multitron, Touchtron, Timers, Liberator

APPENDIX B

90-Day Warranty Components

Pressure Hoses, Swivels, Nozzles, Safety Shut-off Guns, Seals, O-Rings, Shop Vac

APPENDIX C

Purchased Products that are Handled Direct with the Manufacturer

Shop Vac, IDX Big Timer, Bill Acceptors, Compressors, Pump Motors





Vac Motor Warranty Policy

Applies to Vacuums and Combination Vacuums and Service Part Kits containing the GinSan Vacuum Motor part number 105111 or 105112.

GinSan will warrant Vacuum motors against defect in original manufacture for a period of one year from the date the vacuum or service part motor ships from GinSan. Additionally, Vacuum Motor Brushes installed in these 2 motors will be warranted against defect in original manufacture for a period of 90 days from the date of shipment from GinSan.

This warranty requires that the vacuum and motor must receive proper operational maintenance that includes proper filter, motor gasket, filter screen, and motor brush maintenance.

GinSan's liability is limited to replacement parts only. Labor for removal or installation is not covered.

Motor or Brush failure resulting from abuse, misuse, filter failure, or improper or inadequate maintenance will not be covered. Motor or Brush failure that is due to brushes worn beyond the physical wear life of the brush is not covered. Except in the case of original factory installation, Motor or Brush failure due to improper or inadequate installation will not be covered.

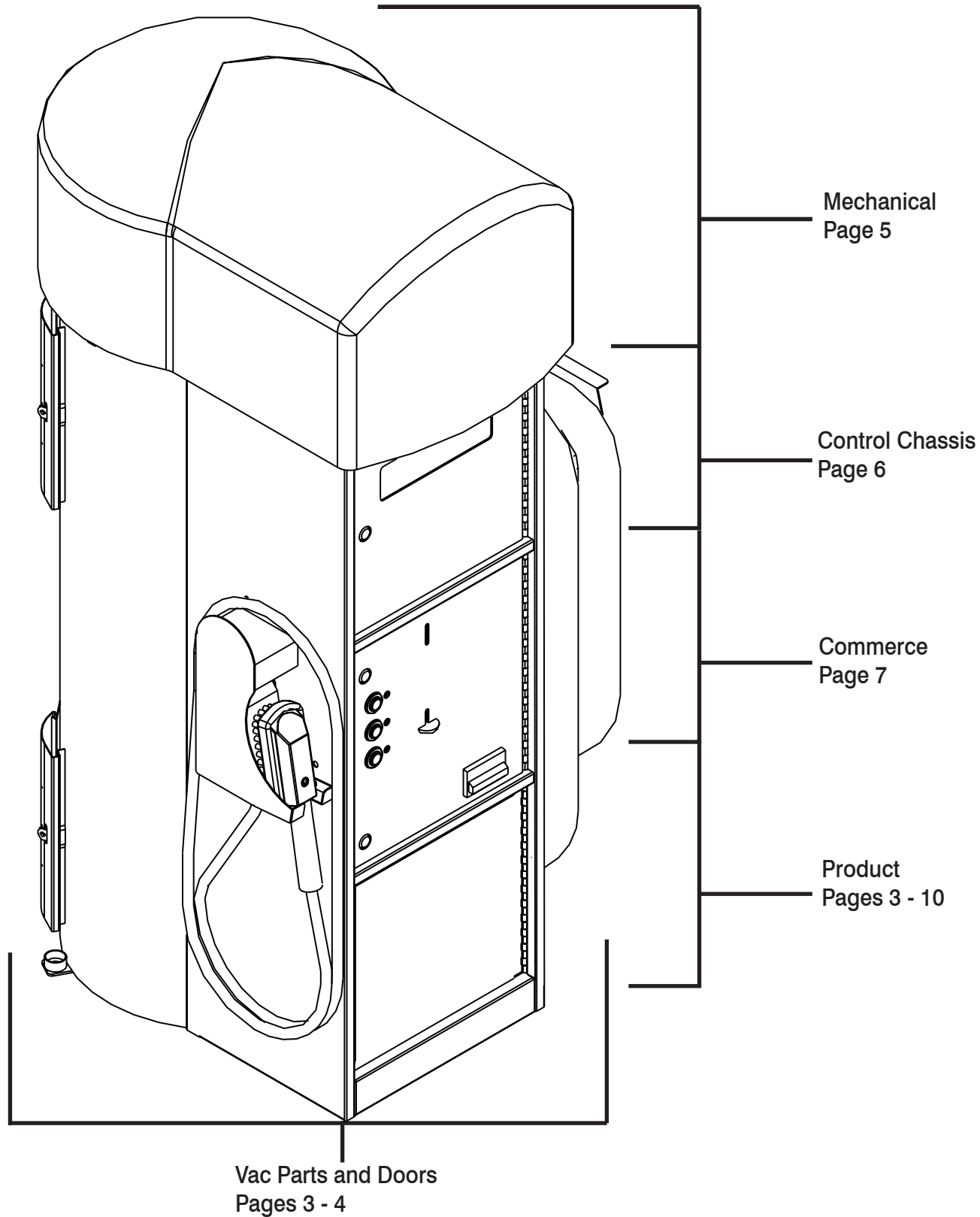
Warranty claims must be evaluated by GinSan. Replacement Motor(s) and/or Motor Brush Kit(s) must first be ordered and invoiced as a service part. An RMA number will be issued at that time. The customer is required to return the failed Motor and/or Motor Brushes to GinSan with the RMA number prominently on the outside of the package. Failed motors must be shipped within 14 calendar days of the shipping date of the replacement Motor and/or Brushes. Customers are encouraged to record a tracking number from the shipper. Shipper data will be the only data used to determine adherence to this policy.

When received, failed Motors and/or Brushes will be evaluated within 5 business days. Motors and/or Brushes that are evaluated as being under warranty will have the invoice for the replacement parts, including shipping, credited within 5 business days of the completion of the evaluation. If a Motor or Brush kit is evaluated to be not covered by this warranty, the customer will be notified within 2 business days. At that time, the customer will have the option to have the failed Motor and/or Brushes returned to them at their expense or they can instruct GinSan to dispose of the components locally.

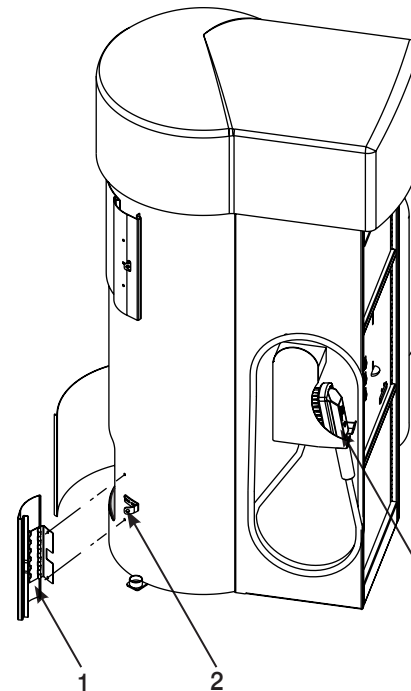
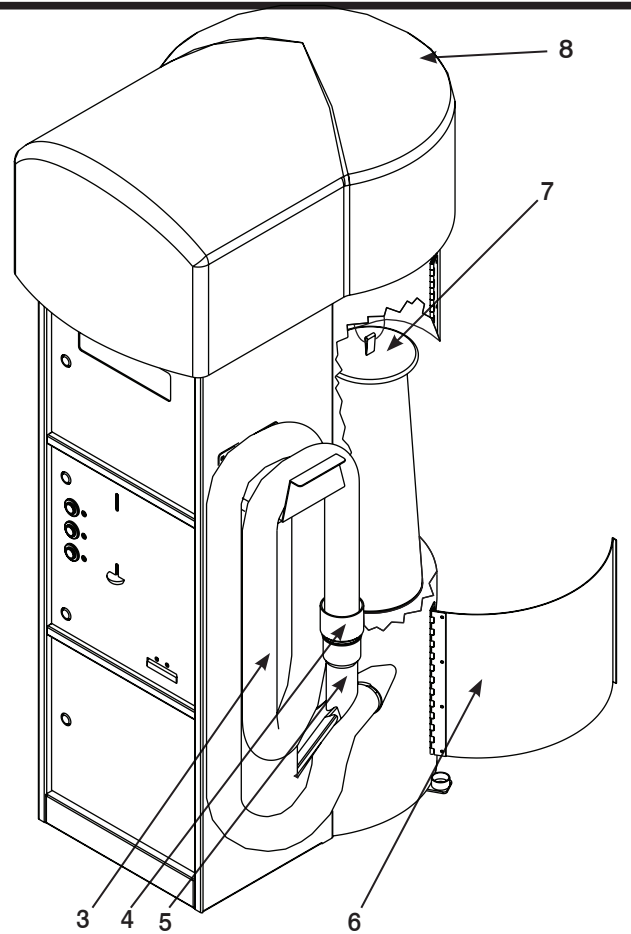
Motors and/or Motor Brushes that are covered by warranty will be retained by GinSan and processed according to its internal policies.

This warranty shall apply only to vacuum motors GinSan Part Number 105111 and 105112 and the Motor Brushes installed in them.





Label	Part Description	Part Number
1	Latchless Lock	1047080
2	Lock Hasp	1047100
3	Vac Hose 2" Colors:	
	Red	1040100
	Blue	1040110
	Yellow	1040120
	Green	1040140
	Gray	1040010
4	Cuff 2"	1021040
5	Tool 2" (Claw)	1082000
6	Clean Out Doors	1058550
7	Filter Bags includes Wire Ties (4 pack)	10290000
8	Dome Colors:	
	Red	5025010
	Blue	5025040
	Yellow	5025020
	White	5025030
	Green	5025050

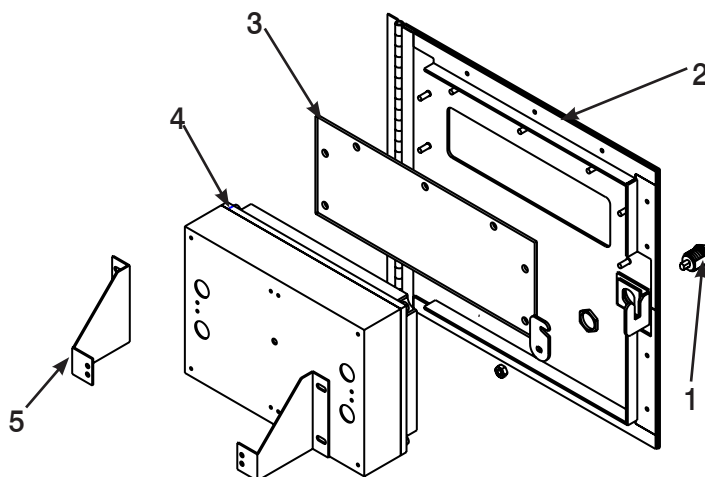


See Page 4 for
Brush Assembly.



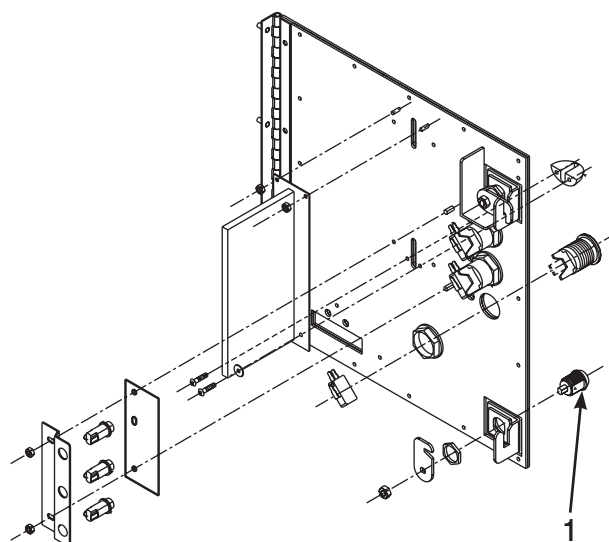
Standard Top Door Assembly

Label	Part Description	Part Number
1	Lock Kit	5048140
2	Top Door Complete With Timer, Less Graphics	53450600
3	Display Lens	5247010
4	Bt917 Display Timer	5280050
5	BT Timer Mounting Hardware	52100400



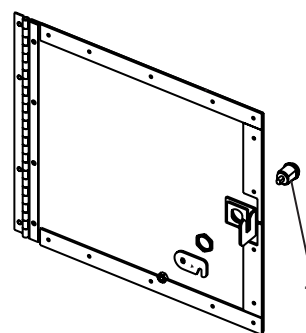
Standard Middle Door Assembly

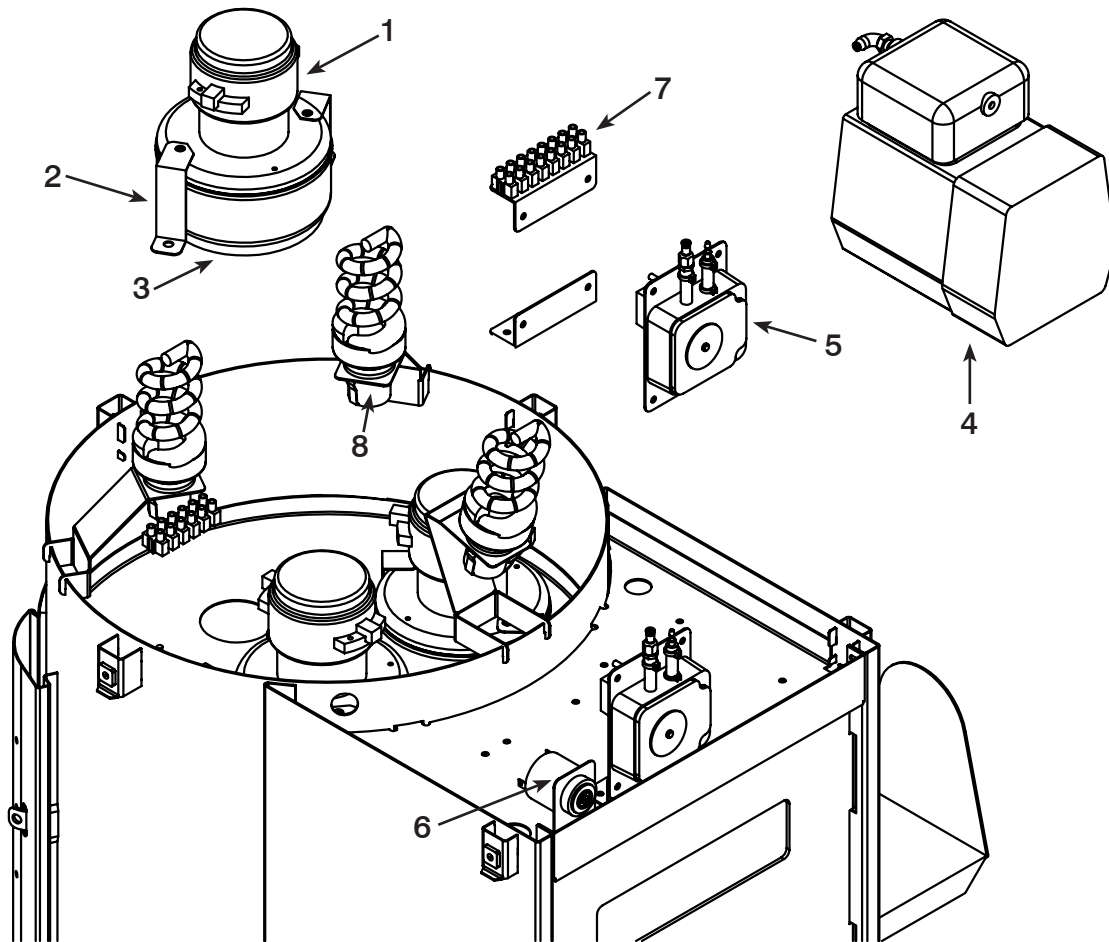
Label	Part Description	QTY	Part Number
1	Lock Kit	2	5048140
	Door Button Kit		5145280
	Middle Door		514525
	Coin Acceptor Options (call sales for details)	1	
	Door Indicator Kit	1	51452900
	Indicator Mount	1	531000



Standard Bottom Door Assembly

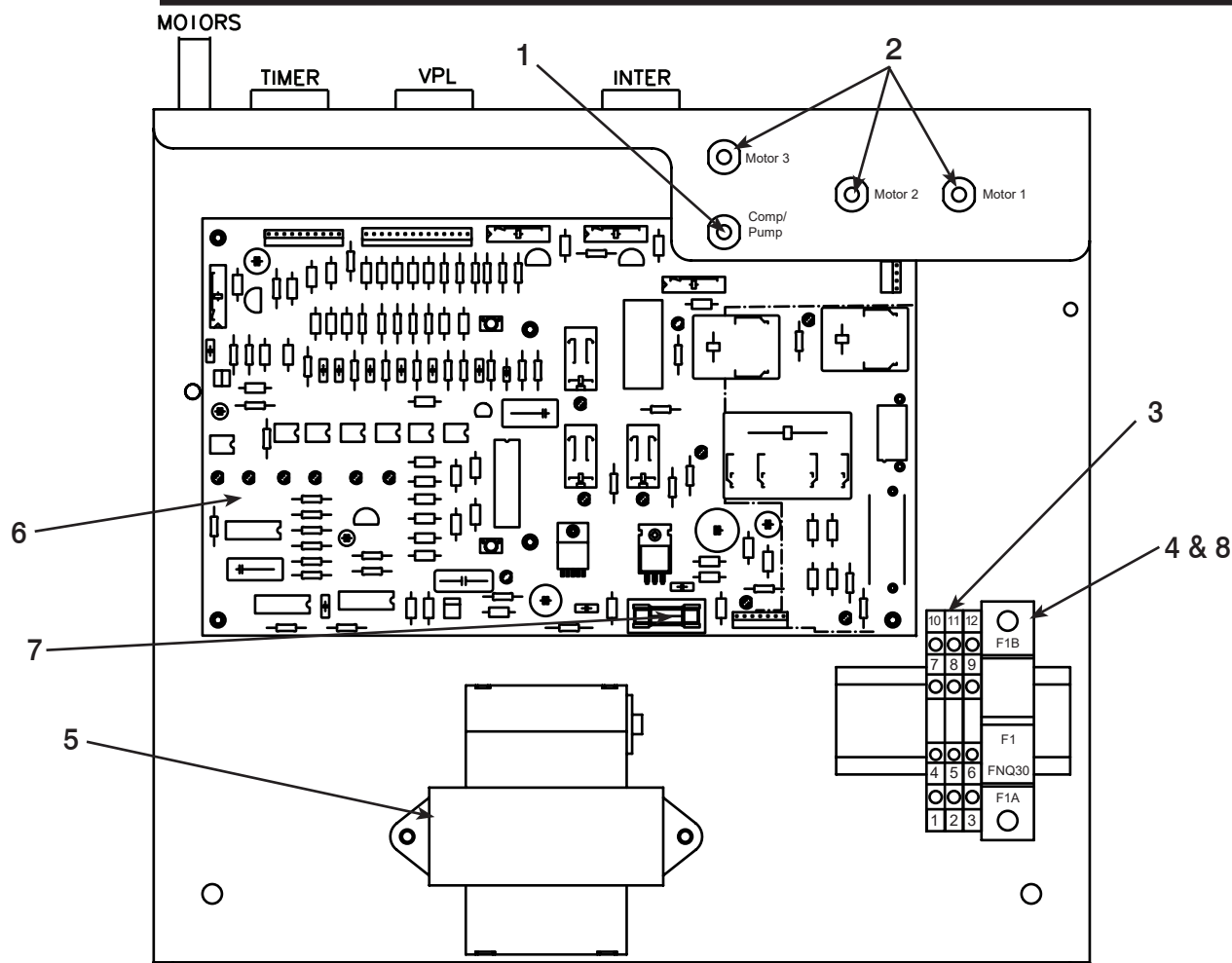
Label	Part Description	QTY	Part Number
1	Lock Kit	1	5048140
	Bottom Door w/o Decal	1	504548





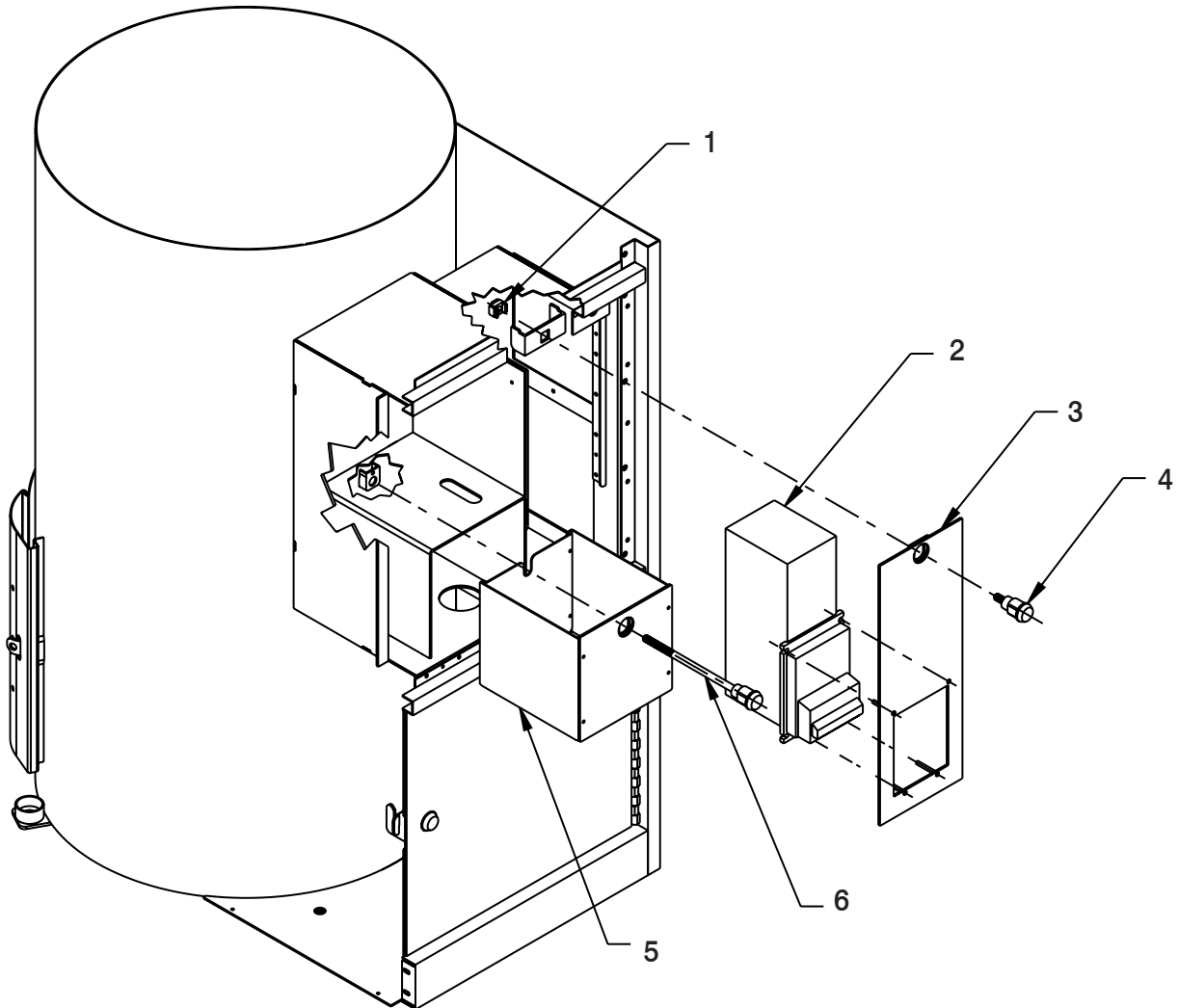
Part Label	Part Description	Part Number
1	Standard Motor (includes gasket and screens)	1051110
2	Motor Bracket (2 per kit)	1010000
3	Foam Motor Gasket (2 per kit)	1033010
4	Air Compressor Kit	5017060
5	Pump	51510600
6	Combo Unit Beeper	1039050
7	Euro Terminal Strip	1018220
8	Light Socket	5046080





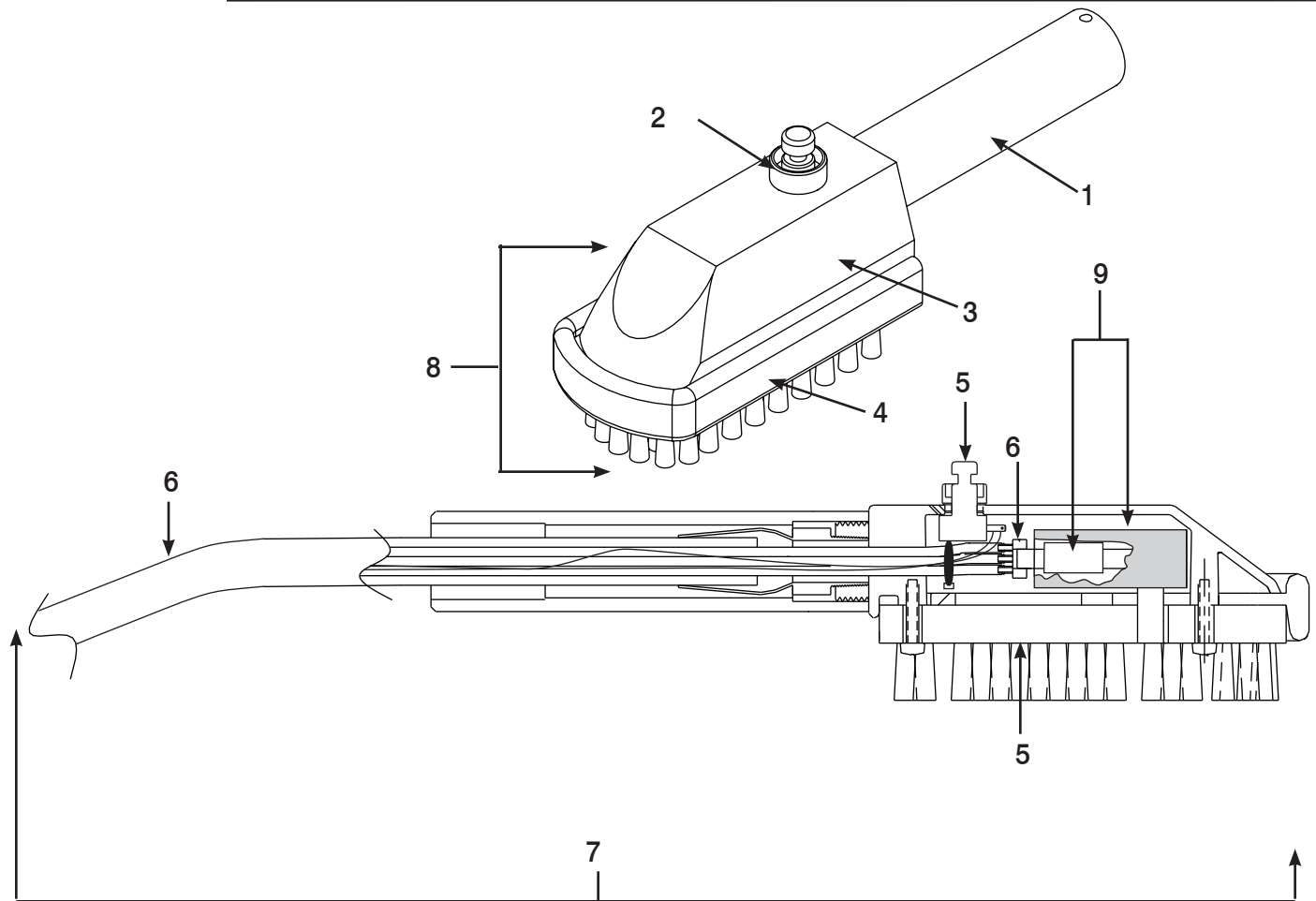
Item	Description	Part Number
1	Circuit Breaker, 8 Amp, Pump/Compressor (120V Models)	5027100
	Circuit Breaker, 5 Amp, Pump/Compressor (230V Models)	502715
2	Circuit Breaker, 15 Amp, Motor (each motor) (120V Models)	5027110
	Circuit Breaker, 8 Amp, Motor (each motor) (230V Models)	502716
3	Terminal Block	5227110
4	Main Fuse Holder	5227050
5	Transformer, 120V/24V/100VA	1078090
	Transformer, 230V/24V/100VA	1078100
6	Control Board, Universal Combo	5011050
7	Fuse, Timer, ABC-2	203220
8	Fuse, 120V Main Power, FNQ-20 (2 motor Combos)	5027130
	Fuse, 120V Main Power, FNQ-30 (3 motor Combos & Mega-Combos)	5227000





Label	Part Description	Part Number
1	Cage Nut (2 pack)	10533400
2	Mars Bill Validator	283500
3	Bill Validator Plate	5258070
4	Medico Screw Lock	5048050
5	Coin Drawer Vault	5096280
6	Long Medico Screw Lock	5048050





Label	Part Description	Part Number
1	Brush Hose Handle	5182130
2	Switch Kit	5177040
3	Brush Body	5182110
4	Brush Bumper	5182100
5	Brush Block	5182060
6	Complete Hose Assy	5140010
7	Full Hose and Brush Assy	5182090
8	Brush Kit	5182140
9	Foam Media Kit	5145140



== PUMP OPERATION NOTE ==
SHAMPOO
WHEN SHAMPOO IS SELECTED PUMP ONE AND PUMP 2 BOTH TURN ON
SPOT REMOVER
WHEN SPOT REMOVER IS SELECTED JUST PUMP 2 TURNS ON

- #5 Red - Not Used

#4 Black - Motor #2

#3 Black - Motor #1 (Plus Non-Turbo Third Motor if ordered)

#2 White - Motor Neutral

#1 Green - Ground Stud Under Dome
- #8 Red - 24VAC Common

#11 Brown - Not Used

#10 Orange - 24VAC Pump #2 (Concentrate)(Red Tube)

#9 Violet - 24VAC Pump #1 (Water)(Yellow Tube)
- #5 Red w/ Black - Horn (+)

#4 White w/ Black - Horn (-)S

#2 White - 120VAC Neutral

#3 Gray Compressor 120VAC Hot

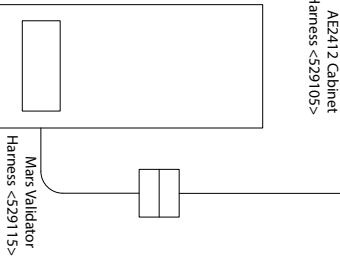
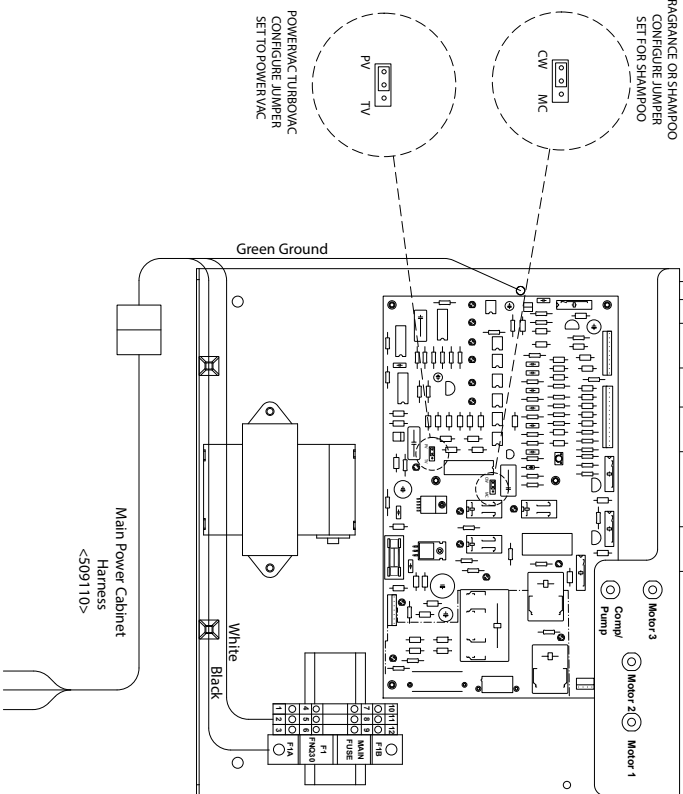
#1 Black - Dome Lights & Heater 120VAC Hot

Combo Motor Harness
<509104>

Combo Pump Harness
<539109>

Chassis Timer Harness
<509121>

Mega Combo
Interface Harness
<539105>



- PIN 1 - Fused 24VAC Hi

PIN 2 - 24VAC Lo

PIN 3 - Coin Pulse

PIN 4 - 2 Time Input (Prem) <Apply 24VAC Hi To Switch>

PIN 5 - Horn

PIN 6 - Timer Output (Timed 24VAC Hot)

SERV 1 - No Connection

SERV 2 - No Connection

SERV 3 - No Connection

SERV 4 - No Connection

SERV 5 - No Connection

SERV 6 - No Connection

SERV 7 - No Connection

SERV 8 - No Connection

SERV 9 - No Connection

IDX 87912
Timer Terminal
Block

IDX Timer Harness
<539104>

#1	#1	Yellow
#2	#2	Red
#3	#3	Blue
#4	#4	Yellow
#5	#5	Brown
#6	#6	Black
#7	#7	White (Not Used)
#8	#8	Green (Not Used)
#9	#9	Gray (Not Used)
#10	#10	Orange (Not Used)
#11	#11	Violet (Not Used)
#12	#12	Pink
#13	#13	Empty
#14	#14	Empty

IDX
Timer Harness
Connector
Chassis
Connector

- Yellow

Red

Blue

White w/ Black

Red w/ Black

Black

White

Green

Gray

Orange

Violet

Brown

Empty

Empty

Mega Combo Door Harness <539106>

- #1 Yellow - Coin Mech 24VAC Hot

#2 Red - Coin Mech and Indicator Lights 24VAC(N) Comm

#3 Blue - Coin Mech and Indicator Lights 24VAC(N) Comm

#4 White - "Power Vac" Indicator (Yellow) <Switched 24VAC>

#5 Pink - Not Used

#6 Gray - Top Solution Selection Indicator (Red) <Switched 24VAC>

#7 Orange - Bottom Solution Selection Indicator (Red) <Switched 24VAC>

#8 Red w/ Yellow - Not Used

#9 Green - (+)24VDC Common for "Turbo Vac" and "Power Vac" Select Switches

#10 Brown - "Power Vac" Select Switch N.O. (Yellow Button) <24VDC>

#11 Violet - Not Used

#12 Tan - Top Solution Select Switch (selection #1) (Red Button) <24VDC>

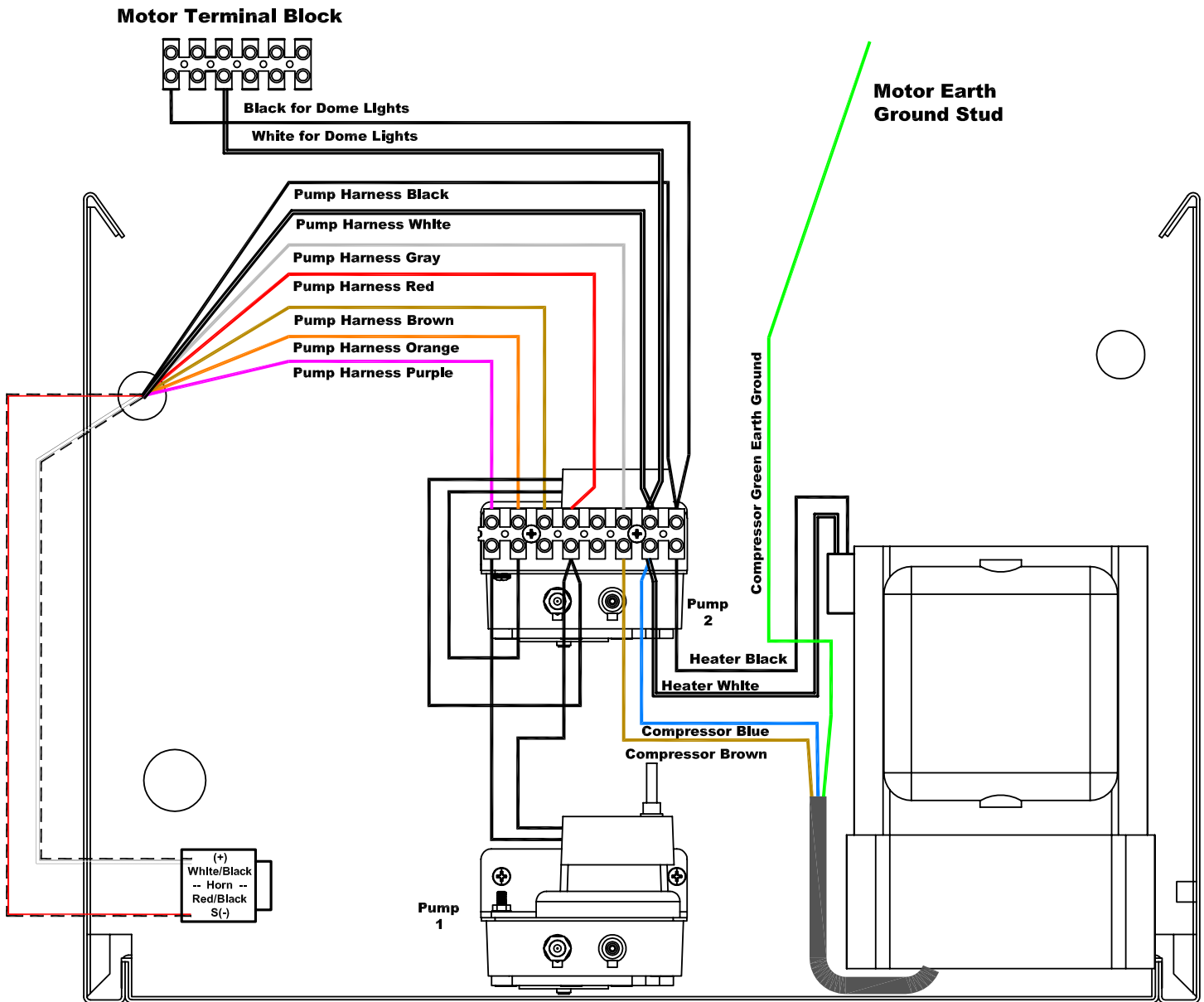
#13 Black - Bottom Solution Select Switch (selection #2) (Red Button) <24VDC>

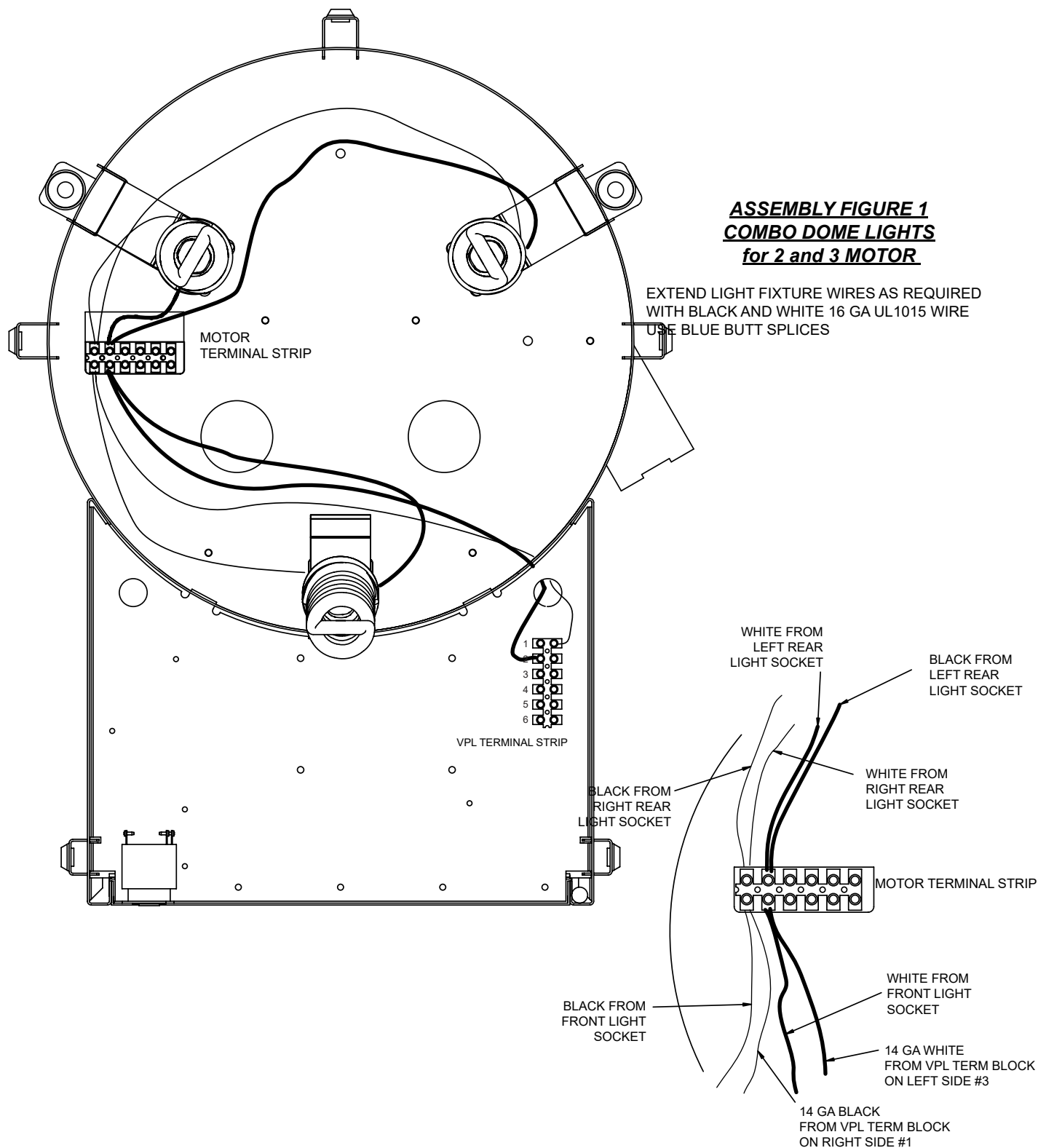
#14 Red w/ Green - Not Used

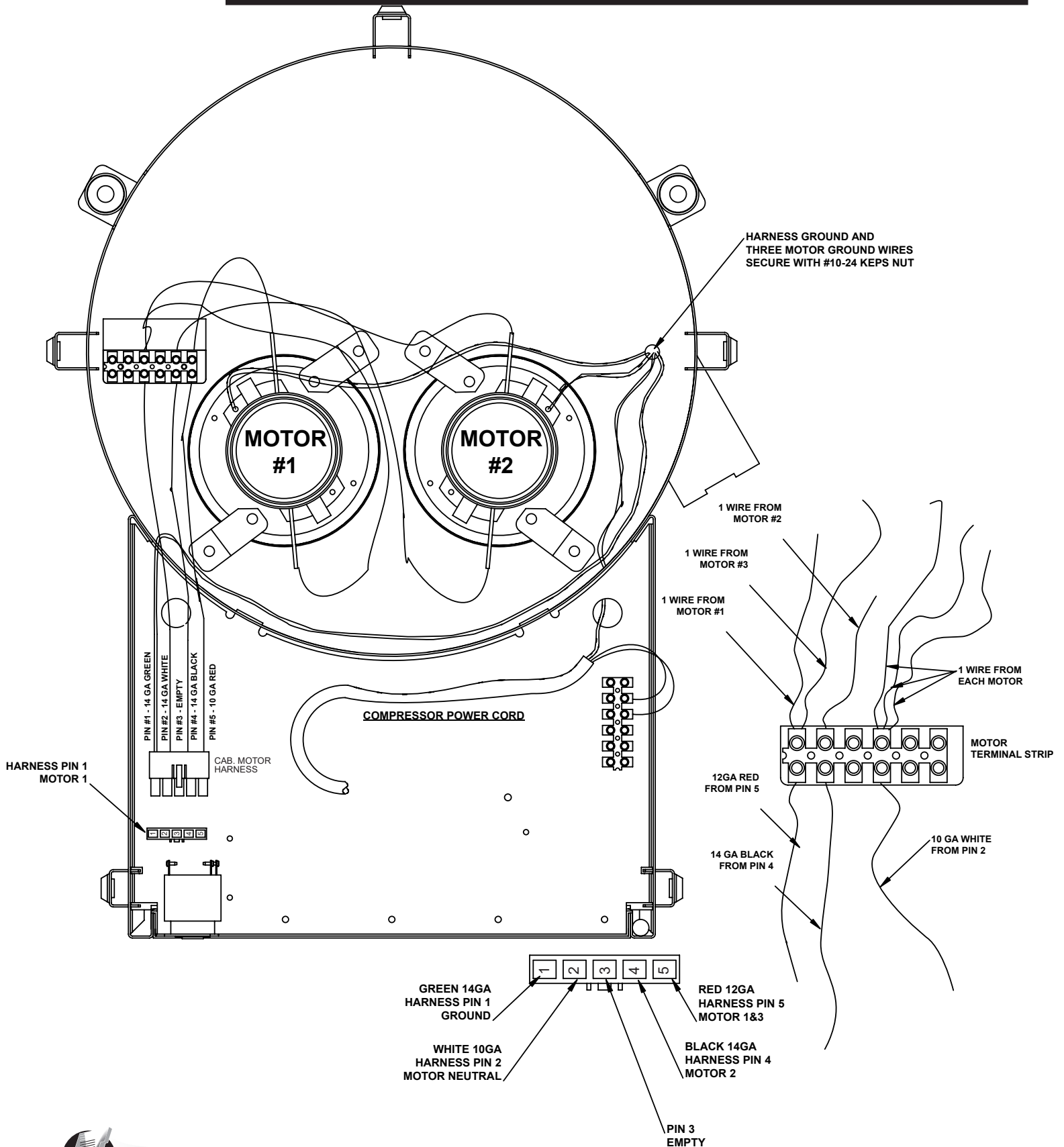
#15 Red w/ Black - (+)24VDC Common for Solution Select Switches

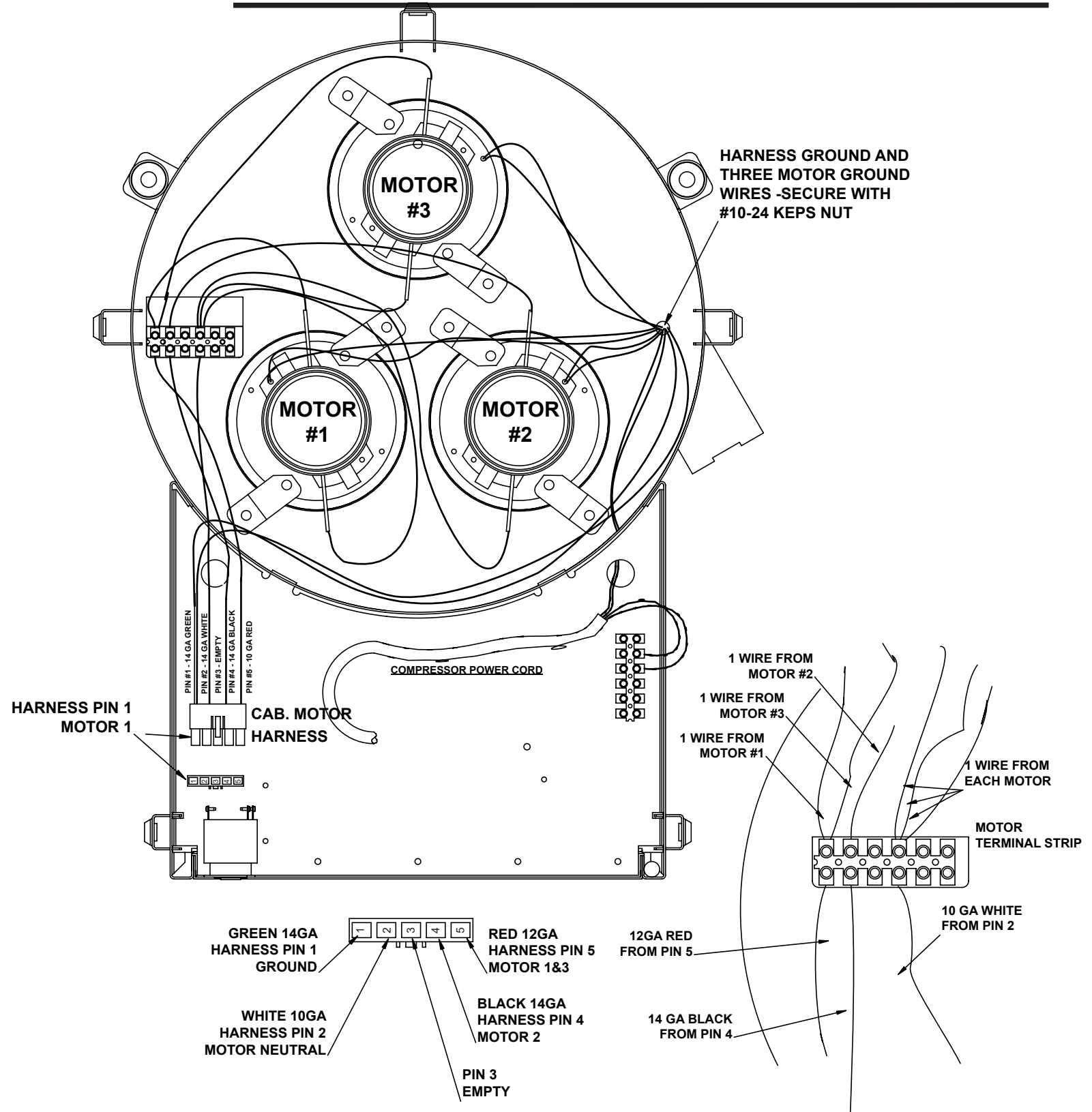
#16 Empty

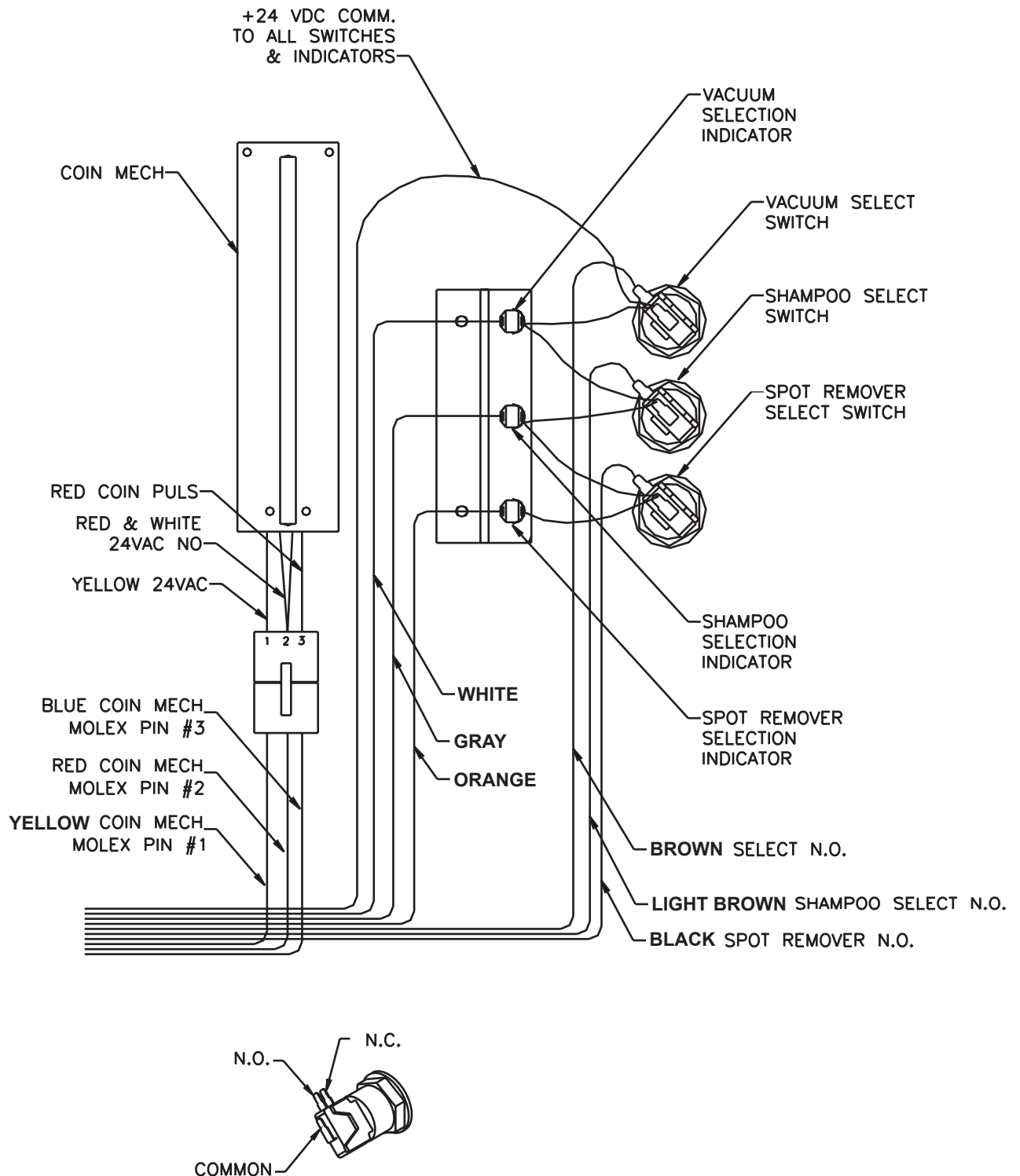
















86240400 -
Carpet Wizard
Dome Decal Kit



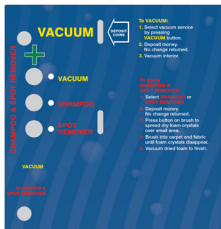
8621100 -
Carpet Wizard
Dome Decal Kit



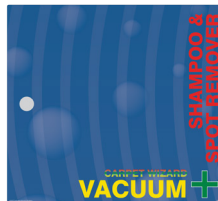
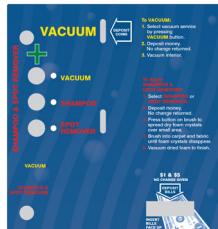
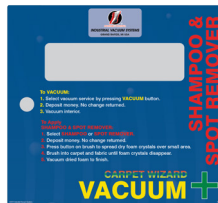
86241000 -
Carpet Wizard
Tank Decal Kit



8621100 -
Carpet Wizard
Tank Decal Kit



86241100 -
Carpet Wizard
Door Decal Kit -
Coins Only



862411B00 -
Carpet Wizard
Door Decal Kit -
Coins and Bills

1080180 -
RC 800 Programmer
for IDX Timer

