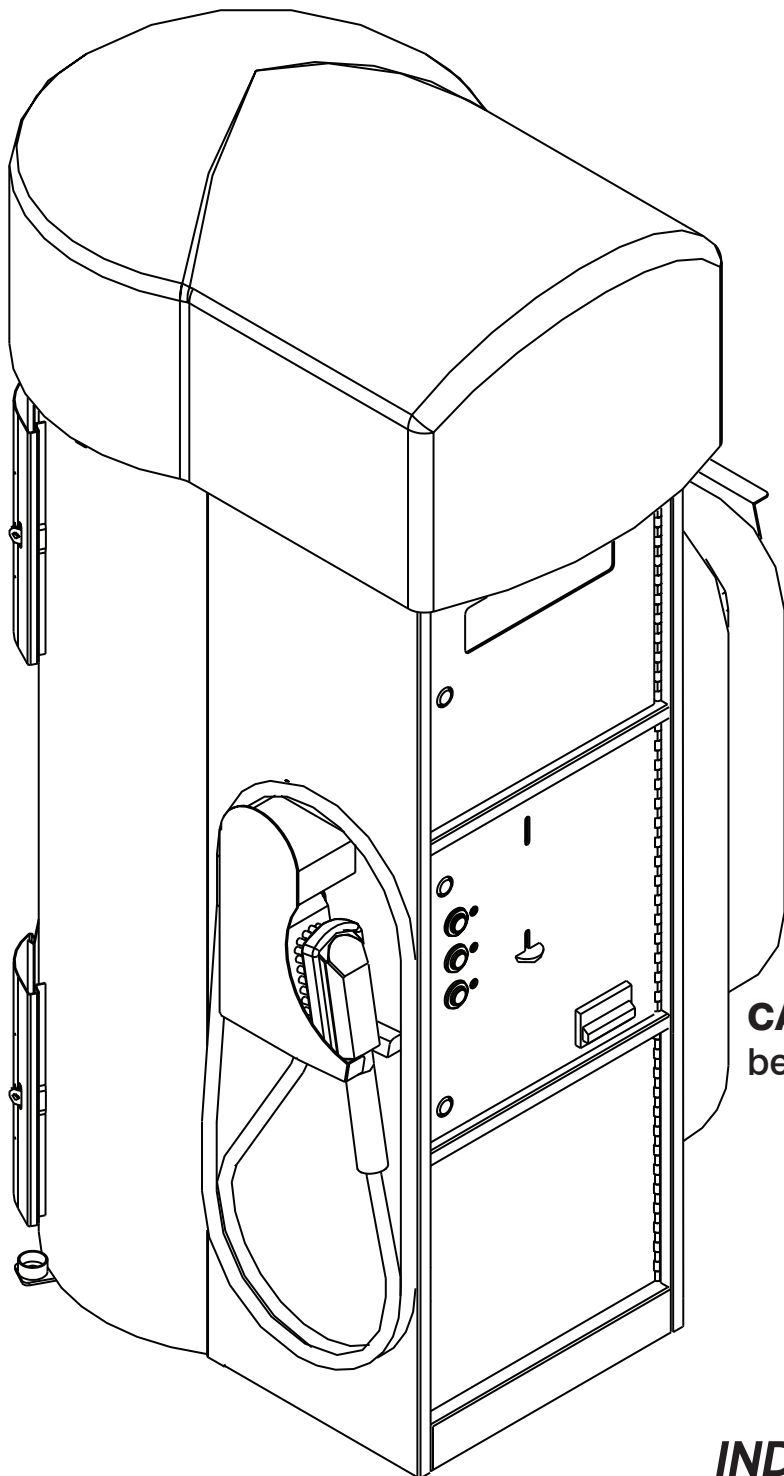


Fresh'N Up



Model 500003 Parts Guide

CAUTION: Read the instructions
before using the appliance!



INCREDIBLY POWERFUL

INDUSTRIAL VACUUM SYSTEMS

Limited Warranty.....	1
Parts Guide	2
Parts Sheet - Vac Parts	3
Parts Sheet - Cabinet Top Doors.....	4
Parts Sheet - Mechanical.....	5
Part Sheet - Control Chassis	6
Parts Sheet - Commerce	7
Parts Sheet - Gun Assembly	8
Machine Wiring Diagram	9
Harness and Pump Wiring	10
Dome Light Wiring Diagram	11
Two Motor Wiring Diagram.....	12
Three Motor Wiring Diagram.....	13
Machine Wiring - Middle Door	14
Notes	15
Decals	16



Industrial Vacuum Systems (Company) provides a limited one year warranty on components and piece of equipment produced by the Company to be free from defects in material and workmanship. Electrical assemblies see Appendix A, have a limited two year warranty on the controller to be free from defects in material and workmanship. This limited warranty does not cover equipment that has been damaged due to misuse, misapplication, modification, altered, neglected, attempted theft, vandalism, connection to improper voltage supply, modification, or such parts that are commonly recognized to be subject to wear in normal usage. Normal use products are, but not limited to, those listed on Appendix B; which are warranted for 90 days. Every component and piece of equipment is packaged to assist in safe handling of the product.

Claims must be submitted in writing within the appropriate coverage period as covered by this warranty, from date of shipment, to the Company's warranty/repair department. If the return is approved an RMA and labeling instructions will be issued and the product can be returned. Returned product without the appropriate RMA and label will be issued to scrap and all warranties/replacements will be considered null and void. If the product receiving the RMA is not returned within 20 days from date of issuing the RMA then any credit toward the product will be reduced by 25%. If the product is not returned within 30 days of issuing the RMA then any credit will be reduced by 50%. A testing fee of \$20.00 will be applied, if the product passes all tests related to the written claim, then the fee will be applied and paid prior to return of the product. If the product fails the test then the fee will not be applied. The Company may charge a 20% restocking fee for returned product and/or an order, which is canceled and/or material has already been ordered and/or received to fill such order.

The Company's warranty/repair department will inspect all components, submitted under warranty. Warranty replacement will be based solely on the analysis and confirmation that the product defect was caused by material and/or workmanship. The company reserves the right to change the design of the product without assuming any obligation to modify any product previously manufactured or to replace warranted product other than with redesigned product. In some cases it is easier for the customer to send a Company purchased product direct to the manufacturer for replacement. In those cases the customer will be notified that their product falls under that process and should work with that manufacturer directly. Appendix C shows the purchased parts that falls under this case.

This warranty covers the product replacement only; charges for damages, freight and/or labor will not be accepted. There are no warranties expressed or implied which extend beyond this Limited Warranty. The loss of use of the product, loss of time, inconvenience, commercial loss, incidental or consequential damages is not covered. The Company shall not be liable for incidental, special, or consequential damages including without limitation damages resulting from personal, bodily injury or death or damages to or loss of use of property.

APPENDIX A

2-Year Warranty Controllers

Sensortron, Multitron, Touchtron, Timers, Liberator

APPENDIX B

90-Day Warranty Components

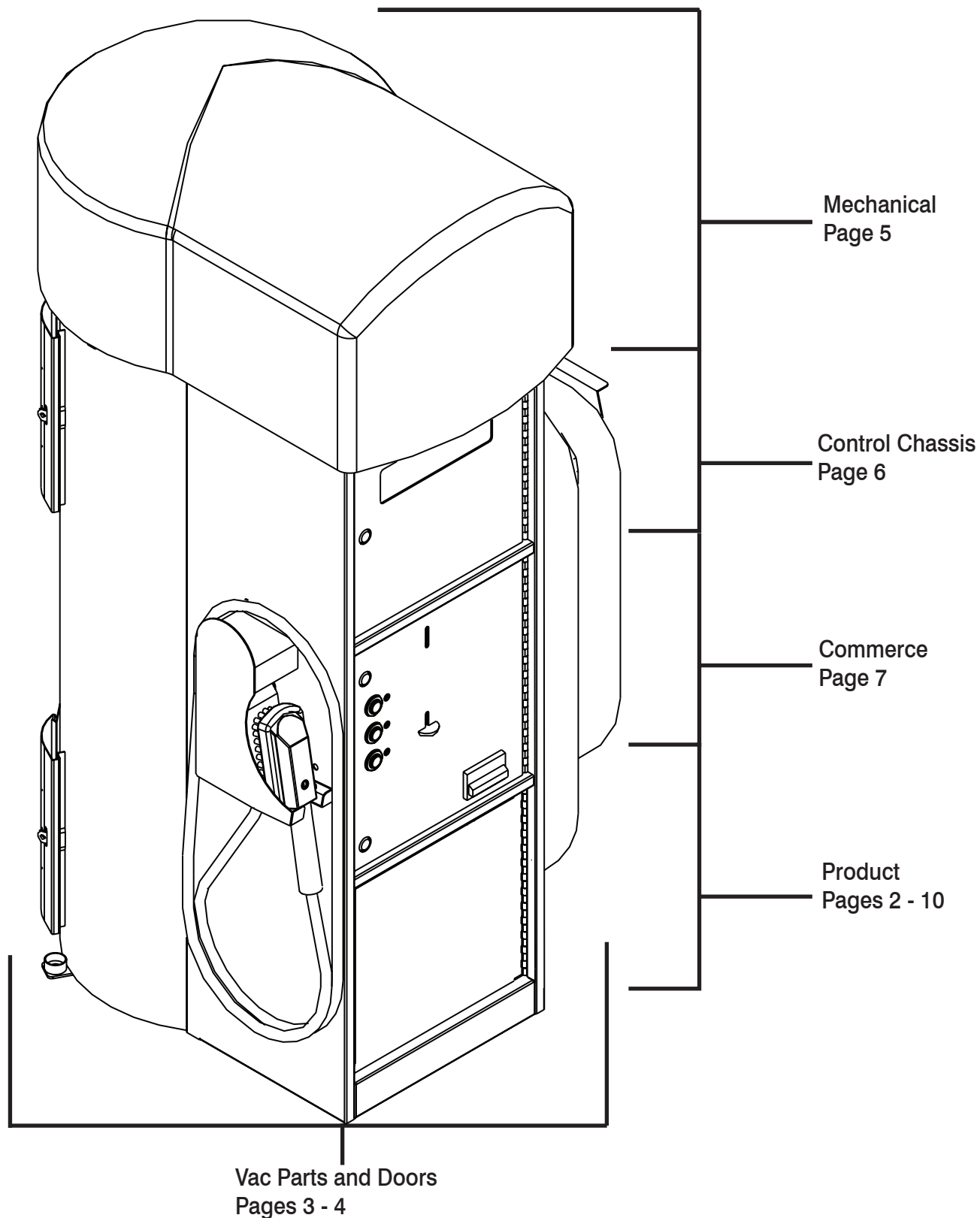
Pressure Hoses, Swivels, Nozzles, Safety Shut-off Guns, Seals, O-Rings, Shop Vac

APPENDIX C

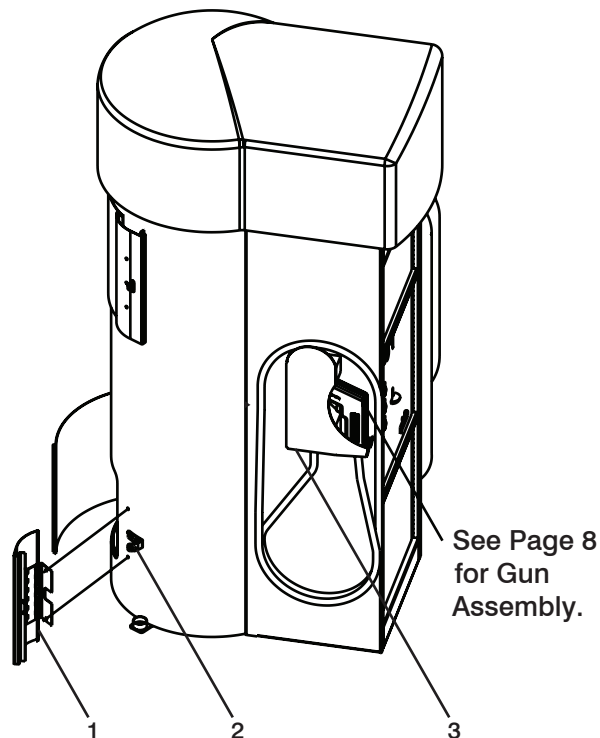
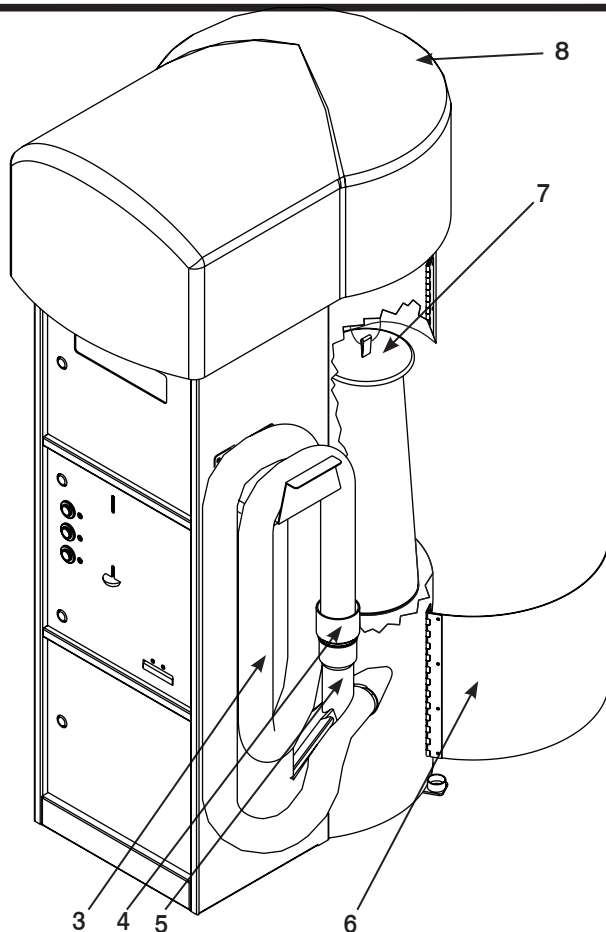
Purchased Products that are Handled Direct with the Manufacturer

Shop Vac, IDX Big Timer, Bill Acceptors, Compressors, Pump Motors



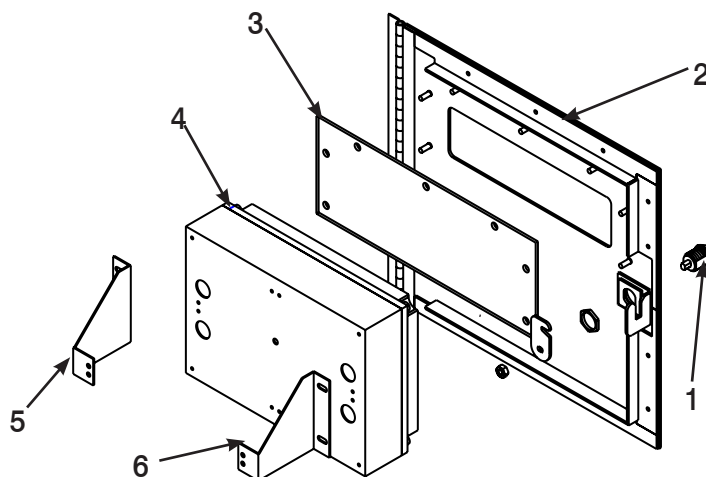


Label	Part Description	Part Number
1	Latchless Lock	1047100
2	Lock Hasp	
3	Vac Hose 2" Colors:	
	Red	1040100
	Blue	104011
	Yellow	104012
	Green	104014
	Gray	104001
4	Cuff 2"	1021040
5	Tool 2" (Claw)	1082000
6	Clean Out Doors	1058550
7	Filter Bags includes Wire Ties (4 pack)	5029020
8	Dome Colors:	
	Red	5025010
	Blue	5025040
	Yellow	5025020
	White	5025030
	Green	5025050



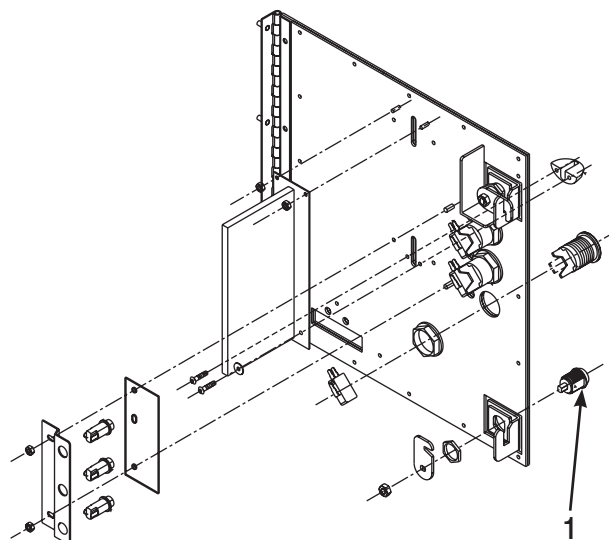
Standard Top Door Assembly

Label	Part Description	Part Number
1	Lock Kit	5048140
2	Top Door Complete With Timer, Less Graphics	53450600
3	Display Lens	524701
4	Bt917 Display Timer	528005
5	RH Timer Bracket	521004
6	LH Timer Bracket	521006



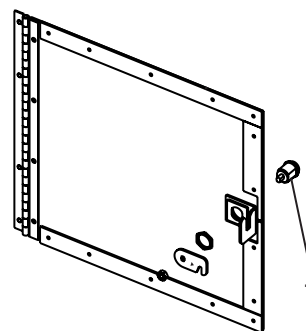
Standard Middle Door Assembly

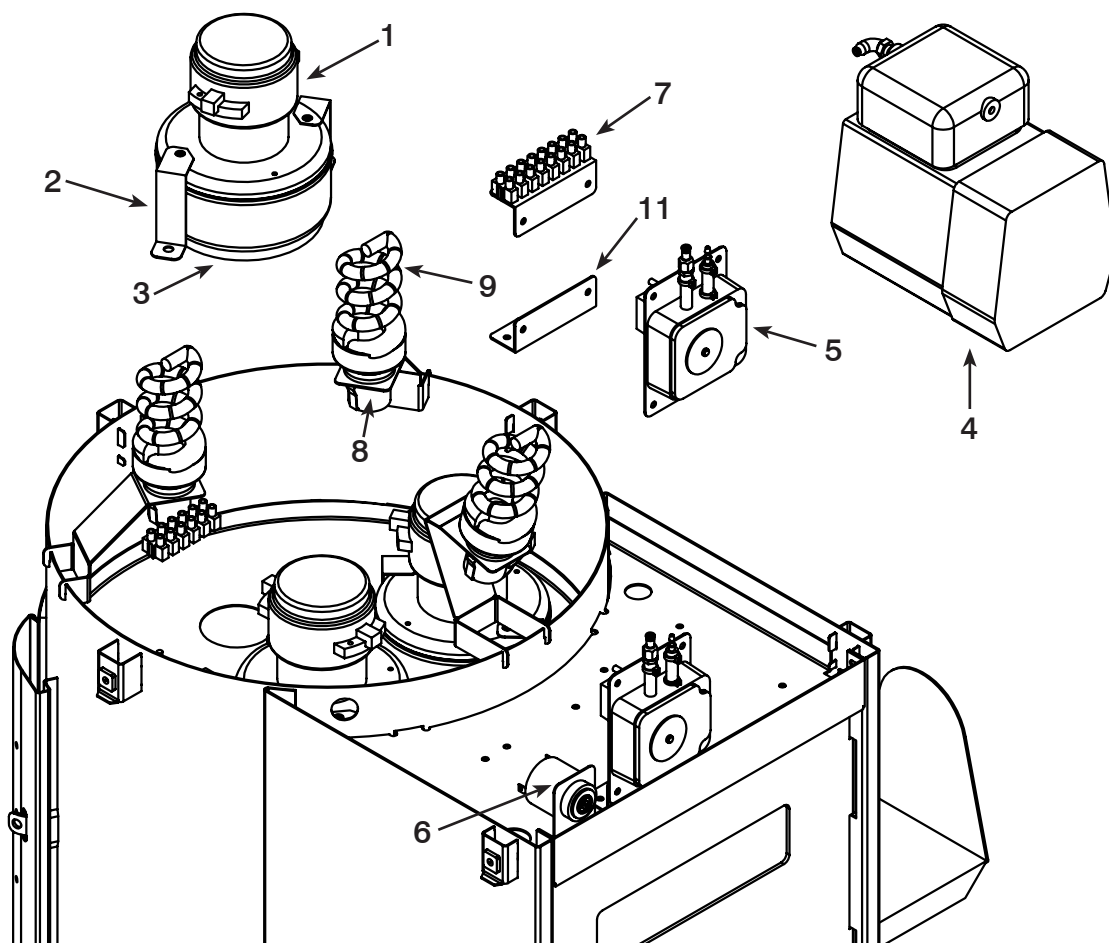
Label	Part Description	QTY	Part Number
1	Lock Kit	2	5048140
	Door Button Kit		5145280
	Middle Door		514525
	Coin Acceptor Options (call sales for details)	1	
	Door Indicator Kit	1	51452900
	Indicator Mount	1	531000



Standard Bottom Door Assembly

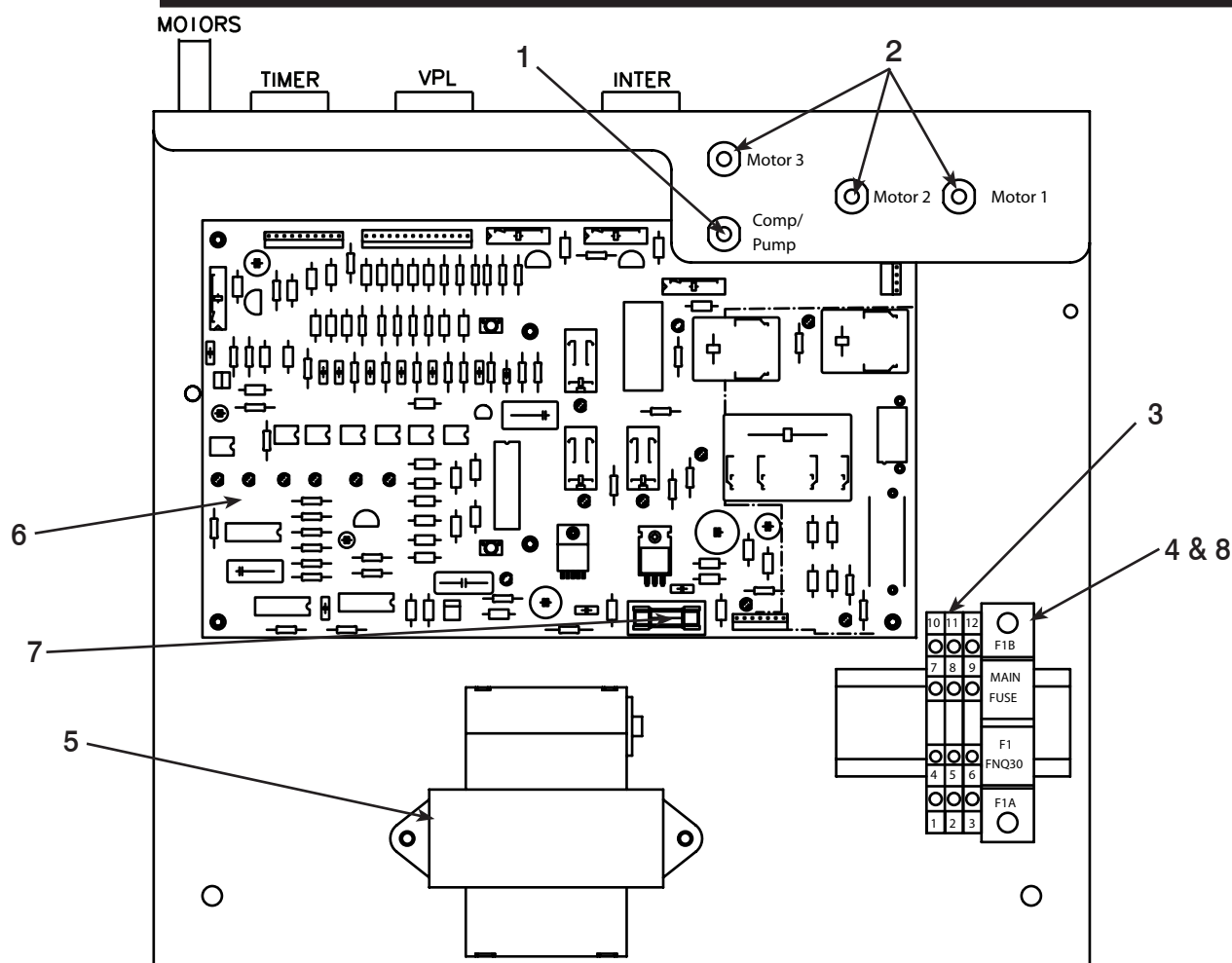
Label	Part Description	QTY	Part Number
1	Lock Kit	1	5048140
	Bottom Door w/o Decal	1	504548





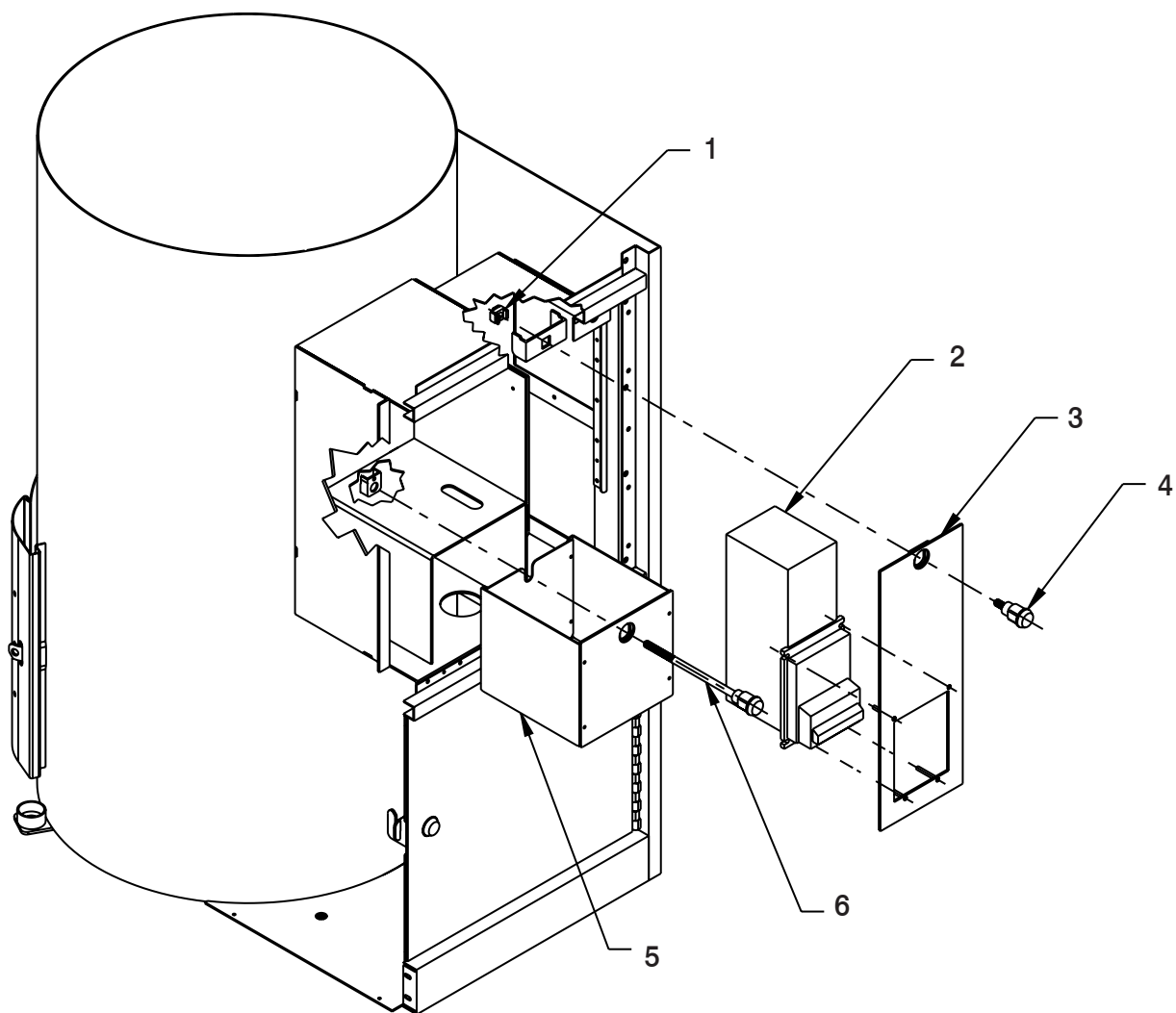
Part Label	Part Description	Part Number
1	Standard Motor (includes gasket and screens)	1051140
2	Motor Bracket (2 per kit)	1010000
3	Foam Motor Gasket (2 per kit)	1033010
4	Air Compressor Kit	5045180
5	Pump	51510600
6	Combo Unit Beeper	1039050
7	Euro Terminal Strip	101822
8	Light Socket	5046080
9	Light	504604
10	Valve/Fitting Compressor	504517
11	Pump Mount	501037





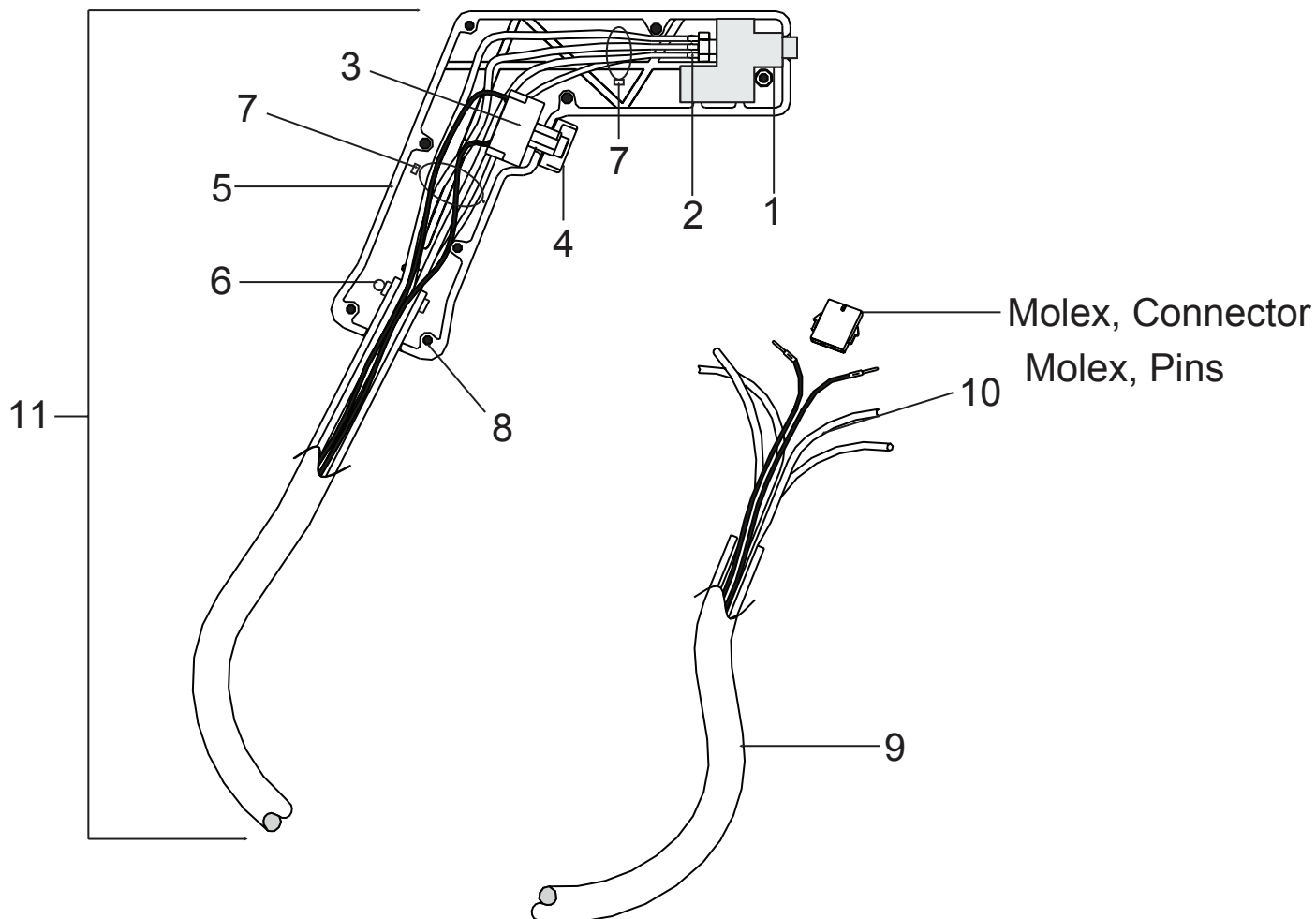
Item	Description	Part Number
1	Circuit Breaker, 8 Amp, Pump/Compressor (120V Models)	502710
	Circuit Breaker, 5 Amp, Pump/Compressor (230V Models)	502715
2	Circuit Breaker, 15 Amp, Motor (each motor) (120V Models)	502711
	Circuit Breaker, 8 Amp, Motor (each motor) (230V Models)	502716
3	Terminal Block	522711
4	Main Fuse Holder	522705
5	Transformer, 120V/24V/100VA	107809
	Transformer, 230V/24V/100VA	107810
6	Control Board, Universal Combo	501105
7	Fuse, Timer, ABC-2	522703
8	Fuse, 120V Main Power, FNQ-20 (2 motor Combos)	502713
	Fuse, 120V Main Power, FNQ-30 (3 motor Combos & Mega-Combos)	522700
	Fuse, 230V Main Power, FNQ-12 (2 motor Combos)	522713
	Fuse, 230V Main Power, FNQ-15 (3 motor Combos & Mega-Combos)	522716





Label	Part Description	Part Number
1	Cage Nut	105334
2	Mars Bill Validator	100259
3	Bill Validator Plate	525807
4	Medico Screw Lock	504805
5	Coin Drawer Vault	525806
6	Long Medico Screw Lock	504806

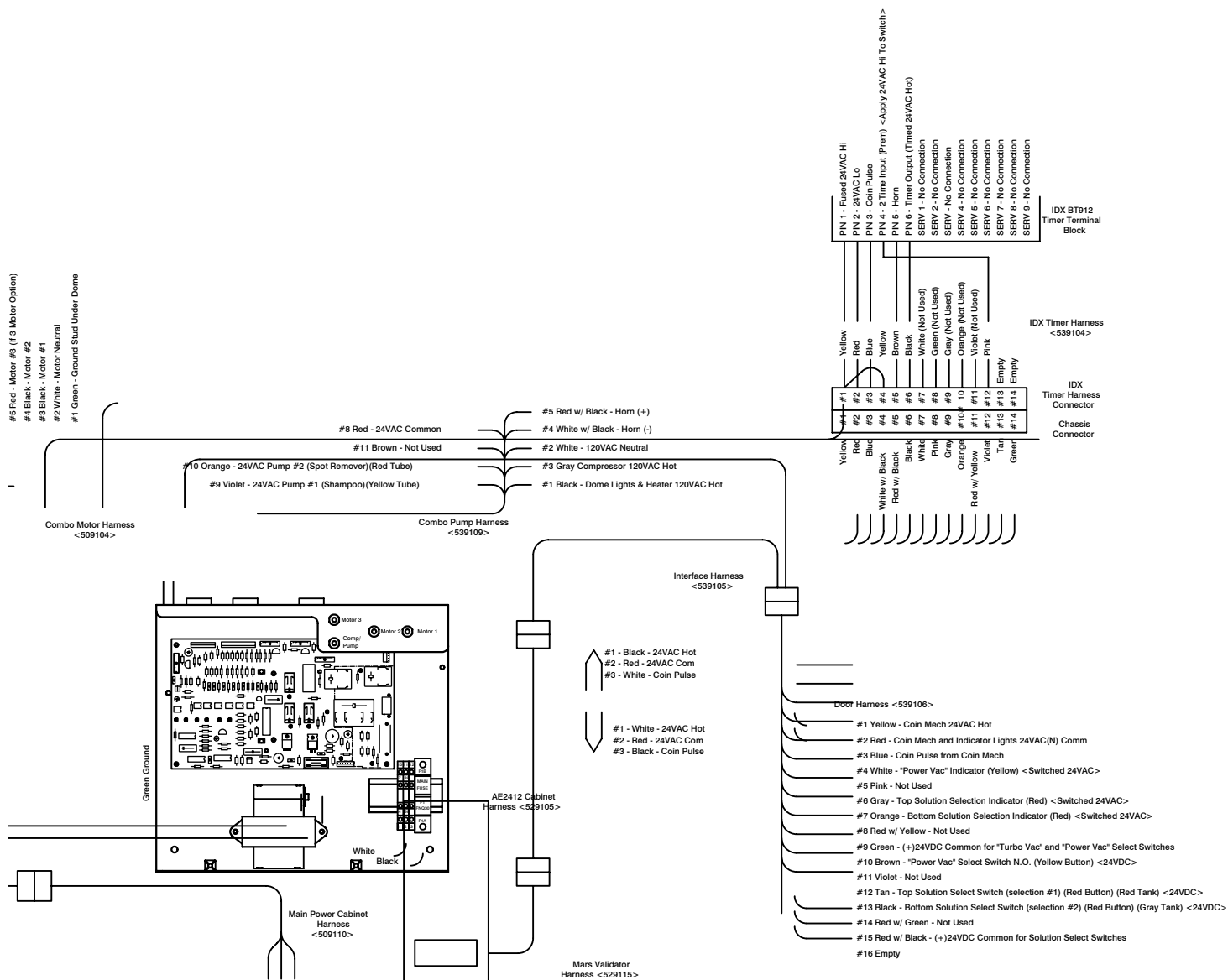


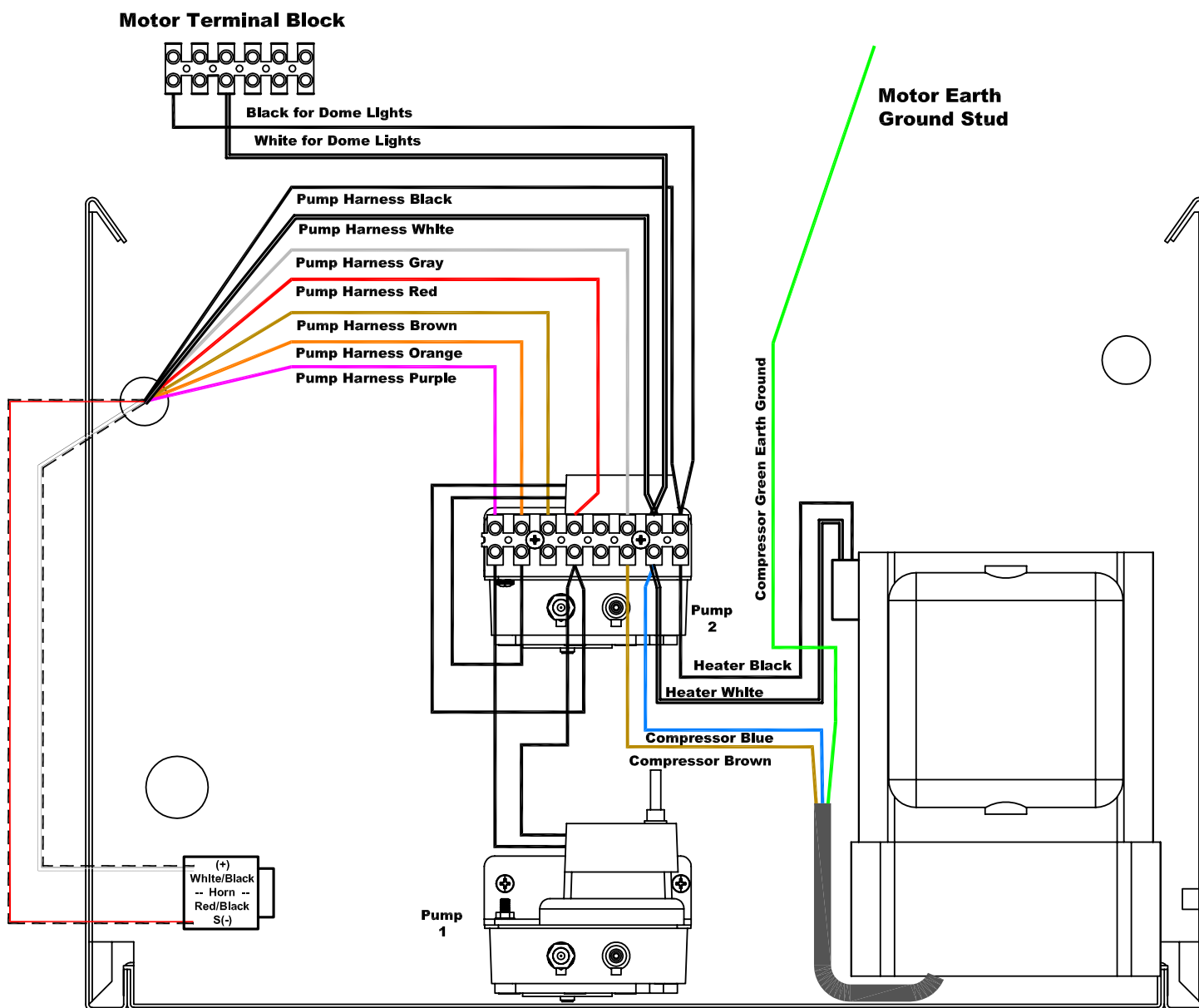


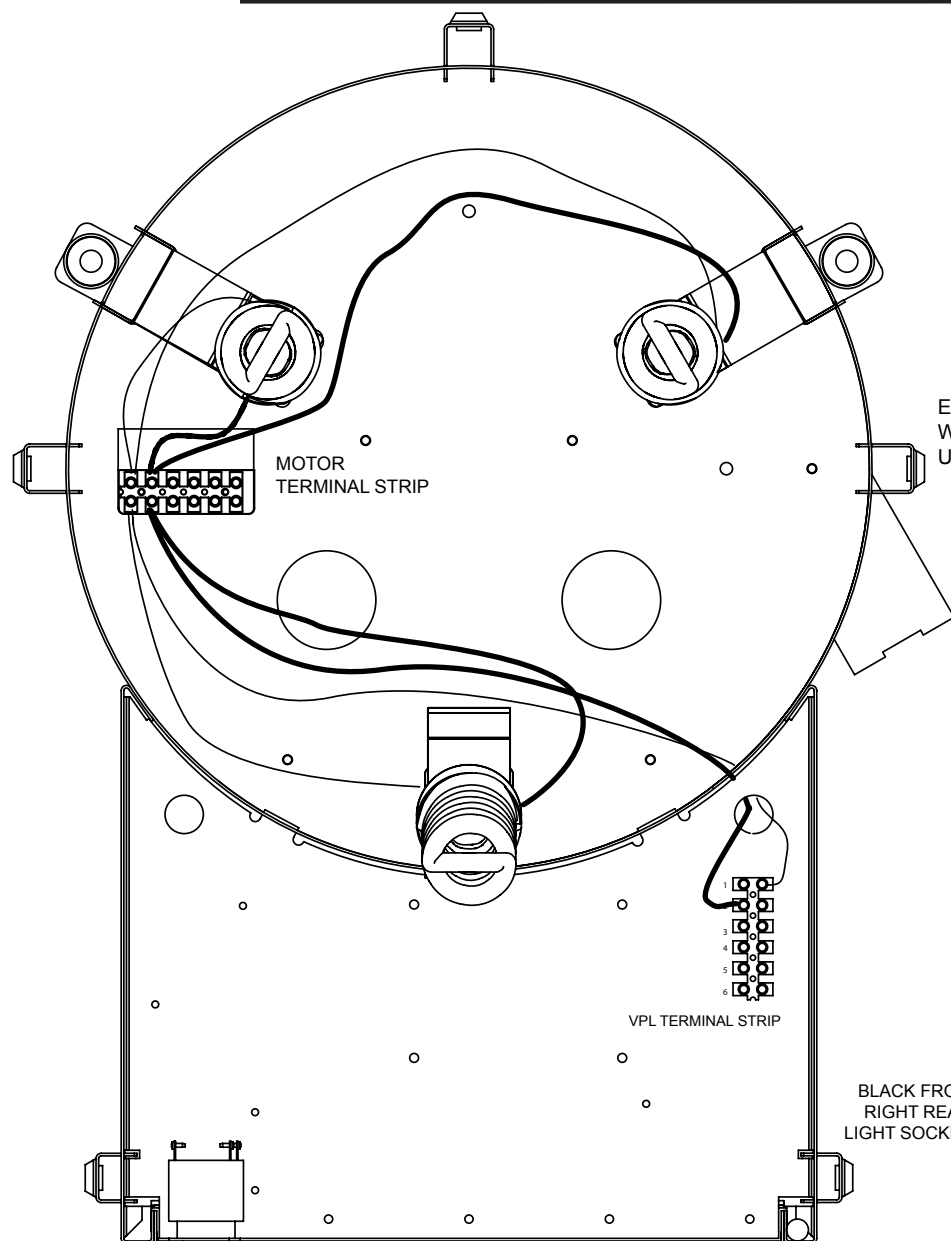
Label	Part Description	Part Number
1	Nozzle Block	5008010
2	4 Port Straight Tube Fitting	503001
3	Trigger Switch	517704
4	Switch Ring	505300
5	Spray Gun	5182060
6	Hose Clamp	101606
7	Nylon Cable Tie	101806
8	#8-32x1" SS Sheet Metal Screw	106919

Label	Part Description	Part Number
9	Hose Assy (Includes Item 10)	504004
10	Delivery Tube & Wire Kit	?
	Molex Connector	101818
	Molex Pins	101819
11	Complete Gun Assy (Includes Items 1-9)	508205
12	Gun Assy Less Hose (Includes Items 1-8)	508207



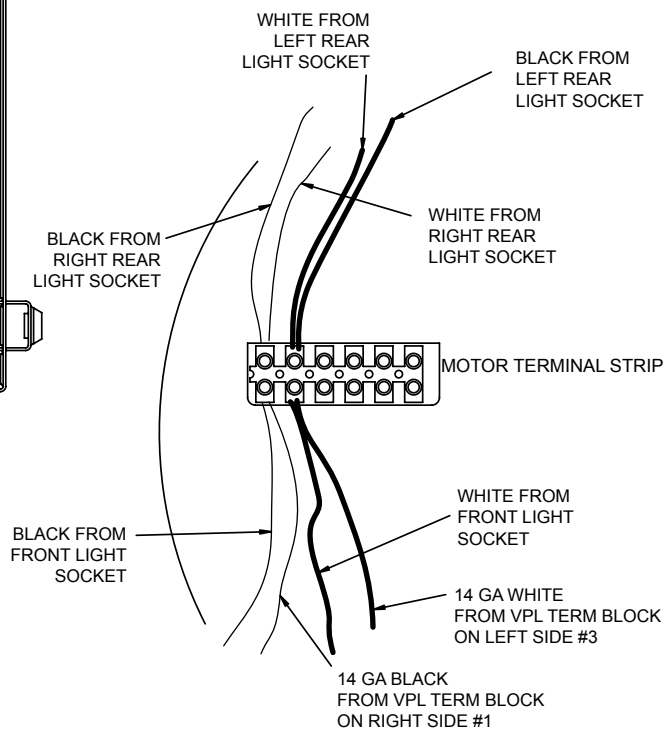


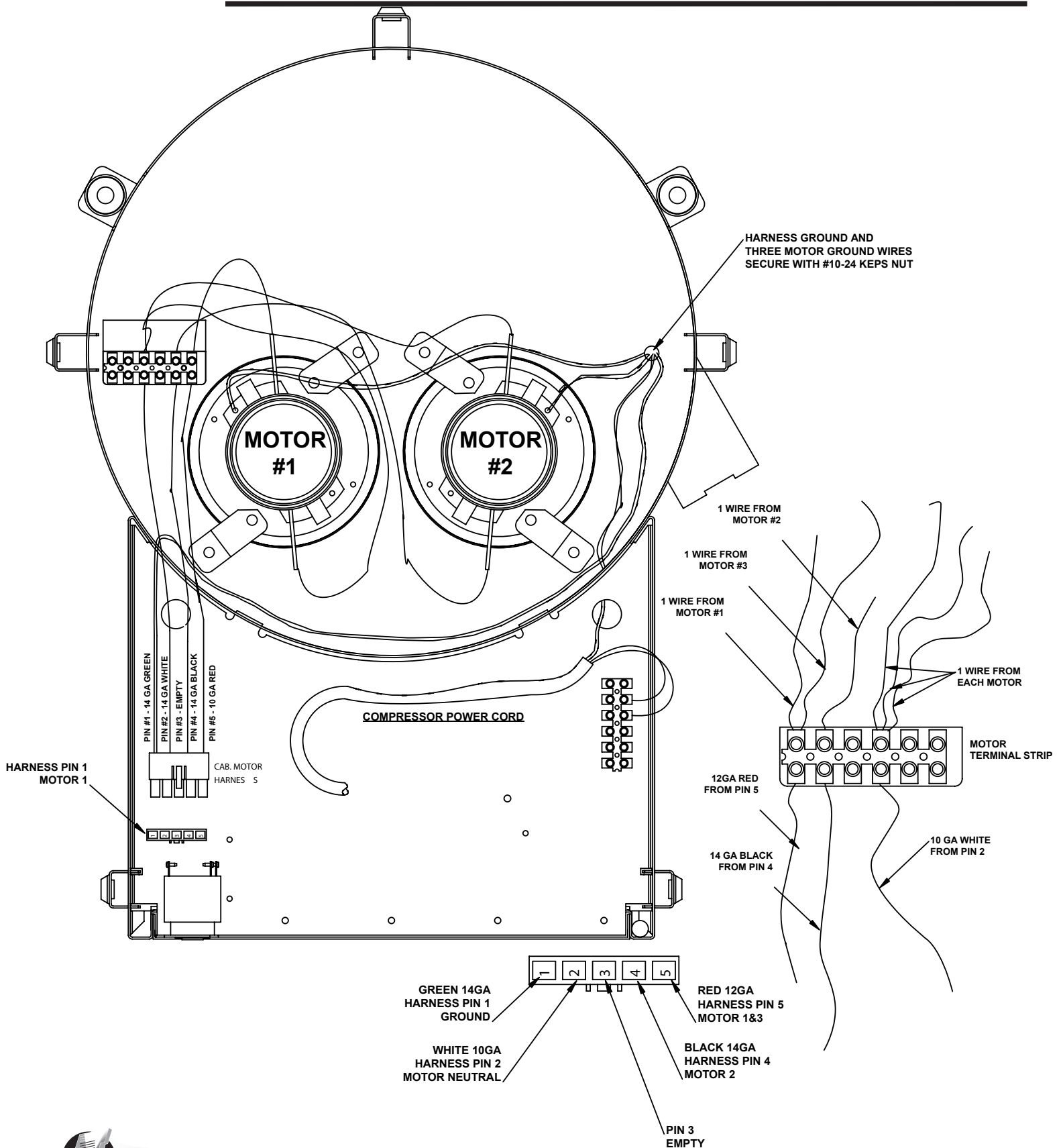


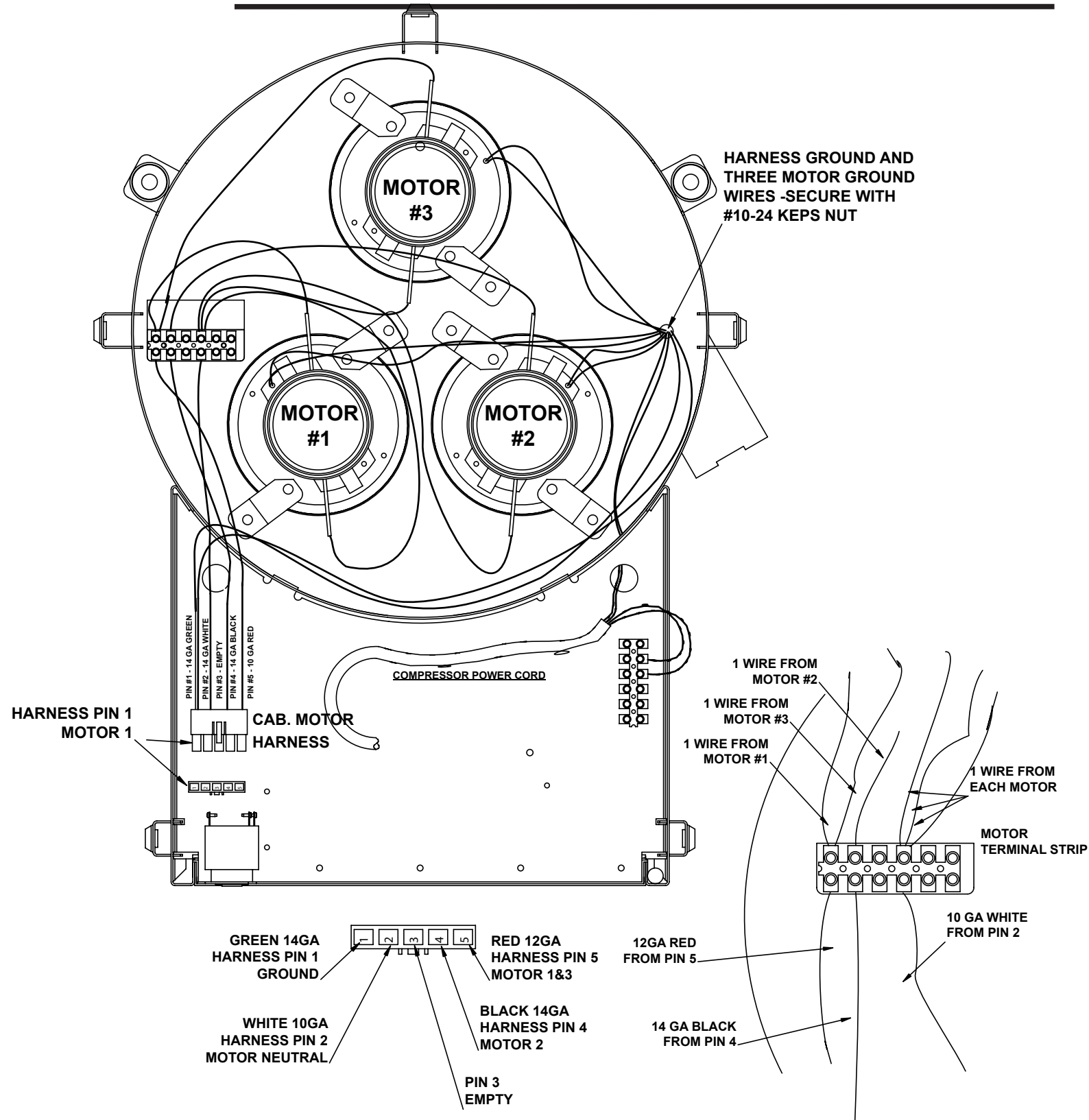


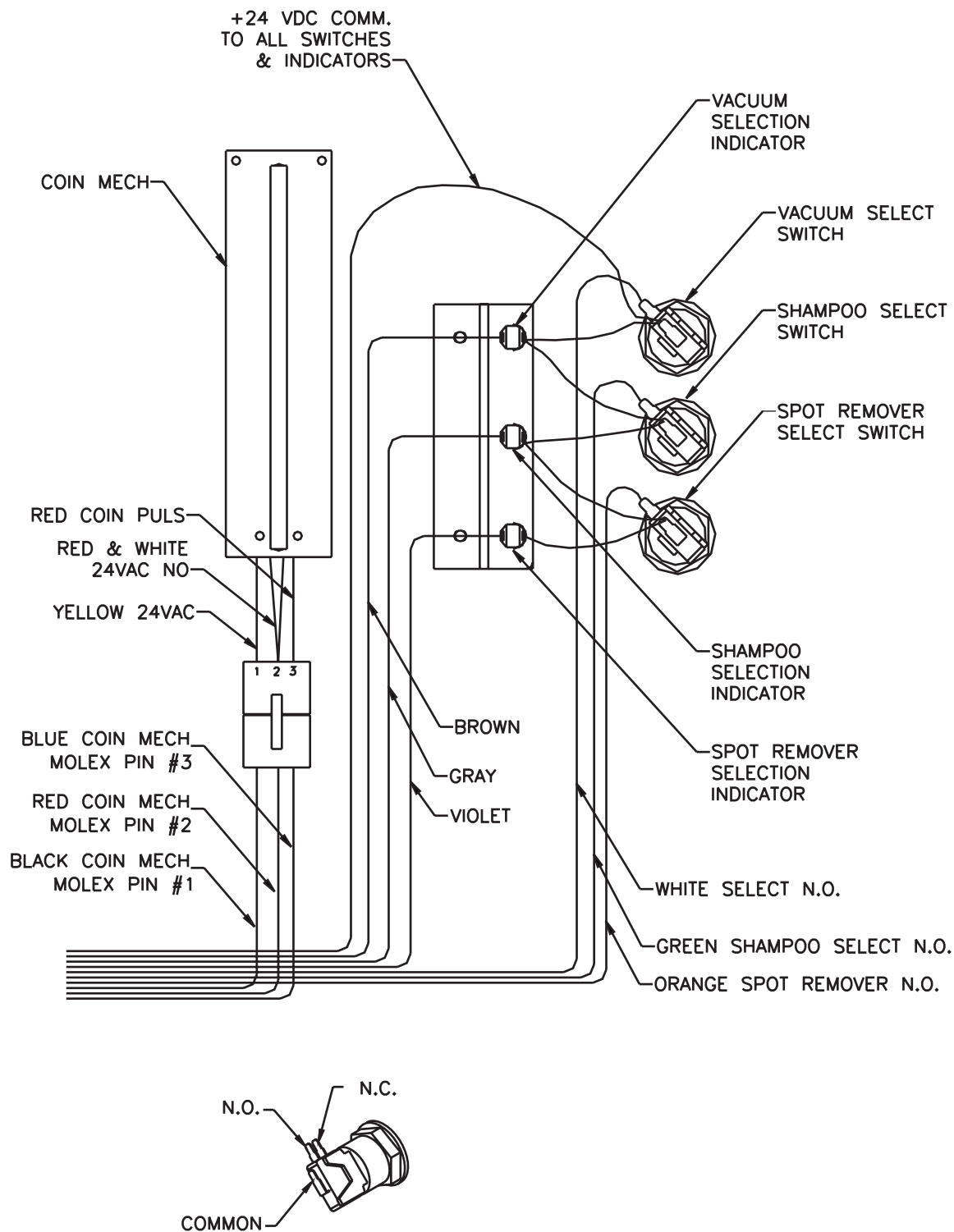
ASSEMBLY FIGURE 1
COMBO DOME LIGHTS
for 2 and 3 MOTOR

EXTEND LIGHT FIXTURE WIRES AS REQUIRED
 WITH BLACK AND WHITE 16 GA UL1015 WIRE
 USE BLUE BUTT SPLICES

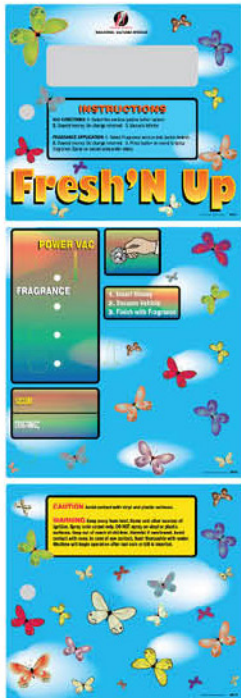












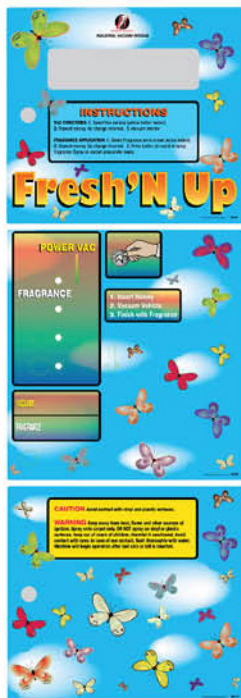
86202400 -
Fresh'N Up
Decal Kit with
Liberator CCDC



8620400 -
Fresh'N Up
Dome Decal Kit



8620600 -
Fresh'N Up
Tank Decal Kit



862010 -
Fresh'N Up
Decal Kit



1080180 -
RC 800 Programmer
for IDX Timer